

# THE RESTORATION OF SHADBOLT PARK & GARDEN

A scrapbook of the works done by  
THE FRIENDS OF SHADBOLT PARK



Dedicated to friends past and present with  
gratitude for the love and care you show to  
our park.

WE THANK YOU



# SHADBOLT HOUSE



*Shadbolt House in October 2010  
Image courtesy of Peter Reed © 2010*

In the 16th century, the land now known as Worcester Park was part of the Great Park of Nonsuch Palace. It was named after Worcester House, built for Lord Worcester who was the Keeper of the Great Park and of Nonsuch Palace. The Great Park was sold off and the original Worcester House was demolished and another built, and a farm established.

In the late 19th C, much of the land belonging to Worcester Park House and farm was sold for housing. In 1920, Ernest Ifill Shadbolt, a former railway engineer in India, bought a piece of land off The Avenue known as Darkfields, so called as a nearby copse cast dark shadows across the field. Mr Shadbolt was a keen plants man and gardener and was a member of the Metropolitan and Public Gardens Association. The Association, which was founded in 1882, worked to preserve open spaces, large and small gardens for the people of London.





# THE FRIENDS OF SHADBOLT PARK

Original Constitution, 2007

## FRIENDS OF SHADBOLT PARK - RULES OF REGULATION/CONSTITUTION

as of  
2007

NAME OF GROUP FRIENDS OF SHADBOLT PARK

AIM/OBJECTIVE TO CONSERVE WHAT IS BEST ABOUT THE PARK AND ENDEAVOUR TO IMPROVE THE REST IN LIAISON WITH EPSOM AND EWELL BOROUGH COUNCIL VIA THE PARK RANGER SERVICE. TO AIM FOR RESTORATION OF 'NATIONAL COUNCIL FOR THE CONSERVATION OF PLANTS & GARDENS' STATUS FOR THE HEMEROCALLIS COLLECTION.

TO REPRESENT THE INTERESTS OF SHADBOLT PARK USERS.

MANAGEMENT THE COMMITTEE TO CONSIST OF CHAIRMAN, TREASURER AND SECRETARY TO STAND FOR A THREE YEAR TERM TO BE ELECTED BY THE MEMBERSHIP. SAID MEMBERSHIP TO CONSIST OF ALL THOSE WHO SHARE THE AIMS AND OBJECTIVES OF THE FRIENDS OF SHADBOLT PARK.

*\* Revised to quarterly in 2010*

GENERAL MEETINGS TO BE HELD EVERY TWO MONTHS. \*

EMERGENCY MEETINGS MAYBE CONVENED TO SETTLE URGENT BUSINESS WITH THE COMMITTEE PRESENT PLUS FOUR OTHER MEMBERS.

THE A.G.M. TO BE HELD IN NOVEMBER EACH YEAR.

FINANCE ALL MEMBERS TO PAY ANNUAL SUBSCRIPTION INITIALLY £1.00.

THE TREASURER TO MAINTAIN BANK ACCOUNT IN THE NAME OF THE GROUP.

THE CHAIRMAN, SECRETARY AND TREASURER TO BE MANDATED TO SIGN CHEQUES. TWO SIGNATORIES WILL BE REQUIRED ON ALL CHEQUES.

ANY INCOME AND PROPERTY OF THE GROUP SHALL BE APPLIED TOWARDS THE PROMOTION OF ITS AIMS AND OBJECTIVES.





Heimerocallis [Day Lily]

Painted by Glynis Wills, an honorary friend of Shadbolt Park

# IN THE BEGINNING...

## FRIENDS OF SHADBOLT PARK

Cuddington Residents Association recently agreed to support a 'Friends of Shadbolt Park' group from within its membership. Several of Epsom and Ewell's open spaces already have Friends schemes and the Borough Council acknowledges that an active group of local people can greatly assist it in managing its parks and countryside and can be helpful in identifying priorities as seen by local people.

Shadbolt Park is one of the Boroughs smaller open spaces, but it is 'our park' and a source of pleasure for many people at all times of the year. If we can conserve what's best about Shadbolt Park and hopefully, in time, improve the rest, that pleasure will grow.

How do you use the park? Does it meet your expectations? Whether you jog, walk the dog, stroll with the family or just admire nature there, your comments and opinions are welcome and, if you don't use the park, is there a reason which needs addressing?

Either write to me at: 8, Suffolk Road, Worcester Park KT4 7HG or come along to Cuddington Residents Association meetings where issues involving Shadbolt Park will be regularly aired.

I greatly appreciate having Shadbolt Park in my neighbourhood, as do many others, and feel it is so worthwhile befriending.

*Doreen Bennett*

SUMMER 2004





## FRIENDS OF SHADBOLT PARK and FRIENDS OF EPSOM & EWELL PARKS

At the joint meeting of "Friends of Epsom & Ewell Parks" held in June, representatives from Alexandra Recreation Ground, Court Recreation Ground, Ewell Court Park, Elizabeth Welchmans Gardens and of course Shadbolt Park, met with Stewart Cocker, our Borough Countryside and Community Development Manager, and two of his staff, together with Lesley Danbury, the Chair of the Leisure Committee.

Each representative was given the opportunity to speak about "their" park and to focus on problems ahead. Top of the list for Shadbolt was the sorry vandalised state of the pond area. The formation of a volunteer group to assist anywhere in the Borough together with possible volunteer activities were also discussed. A decision to visit a few parks and open spaces in the Borough was taken, to see what had been touched upon, and three weeks later, on a very hot July afternoon, Stewart drove us all in a community bus, the tour lasting four hours:

Our first visit was the Royal Avenue open space- known to some locals as Parkers field- and Stewart enthused about this site feeling it had good potential from a nature conservation perspective. On to Shadbolt and not only was the poor state of the pond to obvious but also a large section of the *Catalpa Bignonioides*- the Indian bean tree- on the main lawn had been

bought down by a recent storm and then subsequently vandalised. It was felt that volunteers could possibly do a lot of work in the pond area e.g removing debris and improving light levels by thinning the overhanging trees.

Sightings of newts and frogs prompted thoughts of a pond dipping platform. Elsewhere in the park, the wooden posts near the entrance need to be straightened, a park bench need to be moved and some standing dead trees need removal. The vegetation surrounding the brick path walk need to be cut back to make the path easily passable and that around the ginko biloba needs attention to allow the tree to thrive.

Dancer Dick Wood was or next stop and again Stewart emphasized the potential nature conservation.

However the volunteers nominated Royal Avenue open space as the immediate task the aim being to create a woodland trail, the making of which will hopefully attract a number of people from whom a volunteer group will emerge,. The suggested is the October half term.

### POST SCRIPT

The work in Shadbolt Park was completed a week later and with some of the paths being re-surfaced Shadbolt Park is starting to look better.

*Doreen Bennett*

AUTUMN 2004



## FRIENDS OF SHADBOLT PARK, FRIENDS OF EPSOM & EWELL PARKS

At the September meeting of Friends of Epsom & Ewell Parks, a representative from Gibraltar Recreation Ground joined the founder members, bringing the number of parks now represented to six. Each park has its own charms, characteristics and devotees and a shared wish for all the users to enjoy and value the open space prevails.

"The Parks are not what they once were" is often heard, financial limitations causing, if not neglect, then restricted maintenance, and anti-social behaviour unfortunately contributes to decline. Friends groups, though, are determined that problems are recognised and, with the same active support of Epsom & Ewell Borough Council, addressed.

Our own park, Shadbolt, developed from around 1921 when Ernest Ifill Shadbolt bought a piece of land known as Darkfield and began to lay out the gardens around his new home. He was an arboriculturalist of repute and a keen supporter of the Public Gardens and open spaces movements of the twenties, and he utilised much of his ground for the cultivation of shrubs and trees; establishing many specimens uncommon to this country.

On Mr Shadbolt's death in 1936, when the house and grounds were acquired by the Council, gifts of new trees and twelve garden seats with special nameplates from the Metropolitan Public Gardens Association, of which he was

Honorary Treasurer, added to the attractions of the park. At this time, very ambitious plans were mooted, including those for the house to become what we would now call an ecology centre, for the gardens to grow every known wild flower species and for the installation of a model kitchen garden. Sadly, these plans were never realised although the presence of a resident gardener allowed a high standard to be maintained well into the 1980's

Perhaps now is the time to try and formulate a more realistic and achievable long term plan. Would you wish, for instance, to see the pond, which has apparently been the home of exceptionally fine water lilies in the past, once again planted? Perhaps you think, as has been suggested by some, that the pond should be filled in? Should all the identifiable trees be labelled? Would you welcome greater access to the hemerocallis (day-lily) garden, rather than the one day a year restriction at the moment?

I really would appreciate your views either in writing or by telephone and would especially welcome suggestions for possible events in the park in 2005.

**Doreen Bennett**

*8 Suffolk Road*

*KT4 7HG*

*Tel: 020 8337 2366*

WINTER 2004



## SHADBOLT PARK

Welcome work to improve the playground area should be under way shortly with refurbishment making it look more attractive and installations creating more play opportunities. Two new sets of swings are to be provided – one set for toddlers and one set for older children – and a disc roundabout will take the place of two small climbing frames which were removed at the end of last year. The old safety tile surface has reached the end of its life and will be replaced. The goalpost, presently standing in a quagmire, is in a poor condition. Sockets are soon to be installed in three other locations in the paddock to enable the goal position to be rotated in future.

Removal of a number of dead trees, together with tree work to some of the more overgrown specimens, has 'opened up' the arboretum sections of the park. It has been decided to wait until the completion of the extension to the doctors' surgery before shrub pruning takes place, particularly alongside the brick path. It is early days yet for the daffodils in the park but it does seem that their numbers are depleted; hopefully, a 'volunteer' bulb planting programme can be instigated which will also include the paddock area. Further inspection of the pond and much discussion about it has taken place with various options still being considered and other agencies being consulted. It is unanimously agreed, however, that the pond is an

eyesore with no aesthetic value and that priority should be given to clearing away the rubbish.

The November 2004 Friends of Epsom and Ewell Parks' Volunteer Project at the Royal Avenue Open Space seems to have been well received by local people and, although not possible to complete quite as much as hoped, certainly showed what an enthusiastic and motivated group can achieve. Some tree stumps still need to be removed and the path finished; the date provisionally set for the completion of this task is Saturday 2<sup>nd</sup> April. Although St. Mary's Church members were involved with their Christmas Fair on the day the project started, we were all heartened by the offers of help with future works. The Countryside and Community Development Team plan to liaise with St. Mary's Church to ensure a clash of dates is avoided in future and the volunteer potential maximised!

Comments about and memories of Shadbolt Park and Royal Avenue Open Space are welcome and so, of course, are offers of help from volunteers.

Doreen Bennett  
8 Suffolk Road  
KT4 7HG

Tel: 020 8337 2366

SPRING 2005





## FRIENDS OF EPSOM AND EWELL PARKS

Our Borough Council is presently conducting an audit of our parks and open spaces in order to ensure that they are providing the right amount and type of open space in the Borough. It is also looking at facilities such as sports halls. In April, at the start of this process, the 'Friends' attended a meeting with PMP, the company chosen to carry out the audit: PMP is hoping to report on its findings by August 2005.

The categories of open space are:

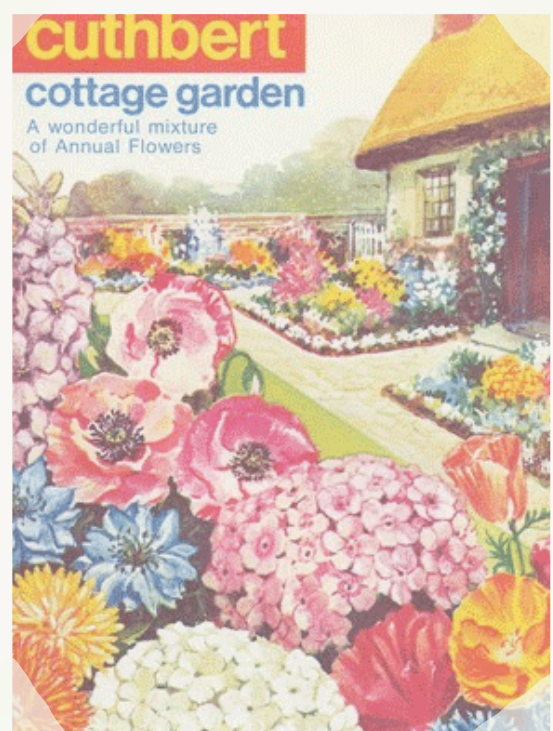
- Parks and gardens
- Natural and semi-natural urban green spaces
- Green corridors
- Outdoor sports facilities
- Amenity green space
- Provision for children and young people
- Allotments, community gardens and urban farms
- Cemeteries, disused churchyards and other burial grounds
- Civic spaces
- Accessible countryside in urban fringe areas

PMP will be auditing the location of the open space, accessibility, quantity, quality (level of maintenance, cleanliness, security, vegetation and interpretation), usage and wider value.

Does Epsom and Ewell have enough open spaces for you and your family to enjoy? Where are the gaps in the provision? Are the parks and other open spaces of good quality? How can they be improved? PMP is consulting widely for responses to these questions and, as well as surveys distributed to the Citizens' Panel (Feedback), workshops for young people and drop-in sessions are being held.

You can contact PMP with your views in three ways:

SUMMER 2005





## SHADBOLT PARK CLOCK

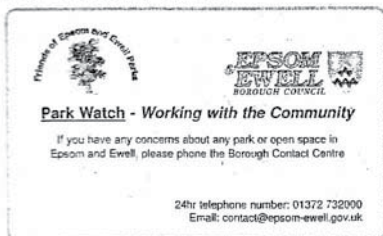
A new clock to replace the original clock which was located on the outside of the Surgery above the door will be 'unveiled' as part of the opening ceremony for the Extension to the Surgery at the end of September. It is anticipated that Jean Smith, Mayor of Epsom and Ewell, will cut the ribbon and declare the Extension open. The clock is the gift of Mrs. Josie Wye in

memory of his husband, William. It will be accompanied by a plaque stating that the clock is presented by Cuddington Residents' Association. The Committee would like to take this opportunity to thank Josie for her generosity and to assure her that it is a gift which will be enjoyed and appreciated by many local residents as they visit Shadbolt Park and the Surgery.

## FRIENDS OF EPSOM AND EWELL PARKS

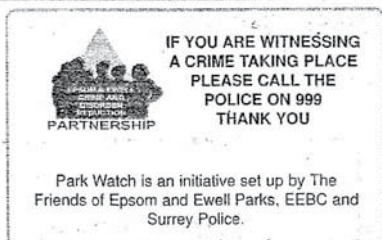
### Park Watch

A new scheme, Park Watch, has been introduced in Epsom & Ewell and a card, of credit card size, is now available to promote the scheme which is an initiative set up by Friends of Epsom & Ewell Parks, Epsom & Ewell Borough Council and Surrey Police.



front of card

back of card



Initially, the Ranger Service will carry the cards to hand them to park regulars, such as dog walkers, encouraging people to be the 'eyes and ears' of their park or open space and to report concerns. Eventually, it is hoped that a member of the Ranger Service, together with a 'Friend' of the local make our Park a fine setting for the official opening of the Extension to the Surgery. Completion of the path at Royal Avenue is the next Friends' project which will take place on Saturday 24<sup>th</sup> September at 10.0am. Preliminary clearing of the vegetation encroaching on the path will be tackled by the Ranger Service and then volunteers can proceed with

park, will call on householders whose properties borders a park to distribute the cards: this is seen as a good opportunity to promote both the Ranger Service and Friends' Groups in general. So, if you reside in Edenfield Gardens, Salisbury Road or Shadbolt Close, for instance, you may be visited sometime in the Autumn! As the card makes clear, 999 should be dialled whenever someone witnesses an offence being committed, including graffiti, as this is classed as criminal damage.

### Shadbolt Park/Royal Avenue Open Space

Discussions are still taking place about the future of the pond: on several occasions recently, it has been completely dry and, therefore, not sustaining any aquatic life. Any rubbish in the pond area should now be removed very regularly by the contractors and, at the moment, is reasonably clear of large debris. At the conclusion of the building works in the Park, hopefully, the shrub beds will be tidied and pruned where appropriate. I am sure park users will agree that the tree work carried out in late 2004 and early 2005 has proved very beneficial to the remaining trees and that the bright bedding schemes now in place covering the path with wood chippings – please do come along if you can – all are welcome! If you require further information, please contact me.



## FRIENDS OF EPSOM & EWELL PARKS

### SHADBOLT PARK

What a pleasure it was recently to meet with John Le Flem under whose stewardship Shadbolt Park blossomed in the 1960s, 70s and 80's. Those really were glorious times for the Park, the wonderful Daffodil and Tulip Days especially, drawing in visitors from way beyond Cuddington's borders. There were guided walks too, among the remarkable variety of trees and shrubs planted by Ernest Shadbolt which, by this time, were reaching maturity and majesty. Retirement for John meant not only giving up his very successful horticultural career spent in Shadbolt Park but also his home there as well. Thus ended the watchful presence as he was not replaced and it is fair to say we have all regretted not only the loss of his green fingered expertise and tender loving care of our Park but also the subsequent rise in anti-social behaviour. CCTV cameras are a poor substitute for people like John who define a community and a neighbourhood.

A corner of Shadbolt Park is losing the National Collection of Hemerocallis (Day Lillies) held there for many years. The care of the Collection is deemed to be beyond the expertise of our Council and, via Wisley, the Collection is to be broken up and the plants offered to individuals there. So, without any local consultation whatsoever, a unique feature has been lost as this was the last National Collection held in an Epsom and Ewell park following the demise some time ago of a Clematis Collection at Bourne Hall.

Finally, have any local residents any knowledge of surviving members of the family of Ernest Ifill Shadbolt? Recent attempts to track down any descendants have proved fruitless so any information would be gratefully received.

**Doreen Bennett**

8 Suffolk Road KT4 7HG

020 8337 2366

WINTER 2005



SPRING 2006  
THE END OF THE  
NATIONAL COLLECTION

In her article on Shadbolt Park (Surrey Gardens Trust Newsletter No. 29, Autumn/Winter 2005) Carol Hill mentioned the National Plant Collection of Diploid Hemerocallis, 1940-1990, in the final paragraph. Sadly the collection has now been dispersed.

The collection had its origin some thirty years ago when Maurice Selwood was Parks Superintendent. With his retirement the collection became neglected and the labels vandalised.

Roger Stedman took over the collection in the mid 1990s and, with the help of Helen Maltby, a Hemerocallis collector and enthusiast, set about identifying the plants. When her health deteriorated Helen offered her own extensive collection to Epsom and Ewell Borough Council.

Helen's enthusiasm had rubbed off on Roger and he gladly accepted the plants and the collection was re-established in a secluded area of Shadbolt Park where it was less likely to be vandalised. The majority of modern Hemerocallis are tetraploid cultivars and are said to have certain advantages over the older diploid forms but I think their flowers lack the grace of the diploids.

In 1997 the Collection was awarded full National Plant Collection® status by the National Council for the Conservation of Plants and Gardens. Apart from some problems with bindweed and the occasional loss of labels the collection thrived under Roger's care. He held an Open Day each year in early July when the majority of cultivars were in full bloom and offered to propagate any plant which caught your fancy. The collection could be viewed by appointment at other times. Almost all the plants have been photographed when at their best and provide an excellent record of the collection which will be preserved.

Roger himself retired in April 2005 and, as the Council did not refill his position of Horticulturist, there was no-one available to care for the collection and the land was also required to provide additional car parking for the adjacent Medical Practice.

When a National Plant Collection® becomes available in this way it is first offered, by the Plant Conservation Officer of the NCCPG, to the other National Plant Collection® Holders of Hemerocallis of which there are six. All the collections are specialised but there were cultivars they wished to obtain so, on the wettest day of last September, four of them worked very hard digging up and splitting the clumps they wanted.

Epsom and Ewell Borough Council has arranged for the Friends of Shadbolt Park to care for the remaining plants in a secluded area of the park but they first gave the Surrey Group of the NCCPG permission to remove any of the plants they wished.

In my role as National Plant Collection® Coordinator for Surrey I went through the remaining plants and chose to remove those which are not listed in the current edition of the RHS Plant Finder. This means they are unlikely to be available in the horticultural trade. This consisted of eighty-nine different varieties and those which remain in the Park, are, with a few exceptions, stocked by very few nurseries.

The plants are now at Wisley and some may be used in the floral displays, others will be propagated by members of the Surrey Group for sale at our Plant Fairs. In this way, they will not be lost to cultivation thereby fulfilling the aim of the NCCPG to conserve, document, promote and make available our rich biodiversity of garden plants for the benefit of everyone through horticulture, education and science.

*Anne Folkes*  
*Chairman and National Plant Collections® Coordinator*  
*Surrey Group, NCCPG*





## Friends of Epsom and Ewell Parks - Shadbolt Park

Welcome signs of Spring are already appearing in Shadbolt Park and, with the encouragement of a few warmer days and some rainfall, the season which for many is the favourite one of the year, will be well under way.

The newly extended and refurbished Shadbolt Park House Surgery has now been complemented by an excellent planning scheme of shrubs in all the beds bordering the building. The range of varieties has been well chosen to provide year round colour and interest – increasingly so as they mature – and is, thanks to the Practice, a wonderful addition to our park scene.

At a recent Friends of Epsom and Ewell Parks meeting, we saw a presentation by Deborah Fox from CABA SPACE, a Government agency which is part of the Commission for Architecture and the Built Environment. Their belief is that putting staff on site in parks is essential and they have launched Parkforce, a campaign to celebrate the role park staff play in the success of their local communities, to tell

the public what modern park staff do and to challenge local authorities to re-invent the way they manage their parks. Their aim is to see on-site staff caring for every significant urban park during daylight hours. Epsom and Ewell Borough Council have 'signed up' to this campaign but, as yet, apart from Parkforce badges being worn by the Rangers, no other commitment has been made. Watch this space!

A borough-wide street tree planting programme is currently under way and, of the total of one hundred and ninety two trees, some seventeen have been allocated to this ward: Ardrossan Gardens, Avon Close, Cleveland Road, Cuddington Avenue, Delta Road, Edenfield Gardens, Mortimer Crescent, Salisbury Road, The Avenue, Vale Road and Worcester Gardens will all receive at least one tree.

Any enquiries about the Friends of Epsom and Ewell Parks in general, or Shadbolt Park in particular, are welcome. Please contact me.

***Doreen Bennett***  
*8 Suffolk Road, KT4 7HG*  
*020 8337 2366*

SPRING 2006





## Friends of Epsom and Ewell Parks - Shadbolt Park - A Fresh Start

A few weeks ago, with very little notice and certainly no ceremony, Epsom & Ewell Borough Council handed the care of the garden in Shadbolt Park which formerly held a National Collection of *Hemerocallis* (Day lilies) to the Friends of Shadbolt Park. Only two other areas in the Borough have Friends groups actively working to improve their space - in Gibraltar Recreation Ground a rosebed is tended by Friends and at Court, a tiny memorial corner has been formed and is being cared for. Looking after the Day Lily Garden is by far the largest management step taken by a Friends group and, not wishing to waste any time at all, a small working group was hastily convened and set to.

The immediate concern is, of course, the care of the remaining Day lilies. Last autumn and winter, the Day lily beds were plundered - albeit by specialist collectors via Wisley - and the cream of the crop taken, but of the 300 plus varieties once held, more than 90 named plants and a few more un-named, do remain.

Hopefully, the Day lilies will flourish under our care, and, with propagation, the stock will increase. Whilst achieving the previous status of a National Collection is beyond our reach, our special Shadbolt Park will still have its own horticultural imprint.

The band of workers, whose enthusiasm is so heartening, have worked wonders already, but much remains to be done and we need lots of help! If you would like to join in and help to create a corner of Shadbolt of which we can all be proud or perhaps offer ideas for the longer term, working towards a management plan for the entire Park which, in turn, could lead to obtaining funding, you will be most welcome. Surprisingly, many local residents appear unaware of the Day Lily Garden and others have not seen it for many years so, please do come along when a working party is in action to see the space. To find out more or to offer assistance or advice, please contact me.

**Doreen Bennett**

8 Suffolk Road, KT4 7HG  
020 8337 2366



SUMMER 2006



# THE GARDENS AS THEY WERE

What we inherited





# THE GARDENS AS THEY WERE

What we inherited





# WORKS IN PROGRESS







## Friends of Epsom & Ewell Parks - Shadbolt Park

For volunteers and visitors alike, the Daylily Garden has been a delight during the summer and it is fair to say that many more now know of the flowers than previously. Despite the removal of many plants earlier in the year, the garden has prospered with the daylilies seemingly able to withstand the dry conditions, albeit with the occasional downpour. There is now the possibility, once we have made contact with specialist growers, that we can add to the collection. Daylilies have been known and grown for thousands of years and reached Europe from their native Asia via the trade routes and, along with peonies and lilacs, were among the few ornamental plants taken to America and used in homestead gardens by the early settlers. Today they remain one of the best selling perennials in America.

There is still much to do in the Daylily Garden as we not only want to care for the plants but to improve the space generally. In time we will compost as much material as we can, save rainwater where possible and provide bird and bat boxes. The volunteers, Friends of Shadbolt Park, have been magnificent and

would be more than happy to welcome others to join them - please think about it if you have the occasional or even regular couple of hours to spare.

Elsewhere in Shadbolt Park efforts are being made by the Tree Officer for Epsom and Ewell to identify some of the rare and unusual trees in the arboretum planted by Ernest Shadbolt. As for the beds and borders, we understood that, due to drought restrictions, we would not be seeing summer bedding plants in our park but, belatedly, towards the end of July, they did appear and are very welcome.

Shadbolt Park is a special place, well loved and well used, and local residents feel the present system of locking the park gates before sunset is helping to keep it special.

If you would like to find out more about volunteering or to comment on issues relating to Shadbolt Park, please contact me.

**Doreen Bennett**  
8 Suffolk Road  
KT4 7HG  
020 8337 2366

SUMMER/AUTUMN  
2006





CONVERTING A BED  
TO LAWN



CREATING A  
SHRUB BORDER

### FRIENDS OF EPSOM & EWELL PARKS - Shadbolt Park

A late autumn with spectacular leaf colouration is a reminder, if one is needed, of the legacy left by Ernest Shadbolt for Cuddington residents to enjoy. After he acquired the Park in 1911, he planted many trees and shrubs and, although some have succumbed with the passage of time, most have survived and are flourishing. Earlier this year, on a hot Saturday morning, Jeremy Young, the Borough Tree Officer, and other members of the Tree Advisory Board (a partnership between the local community and Epsom & Ewell Borough Council) invited our Friends of Shadbolt Park group to join them to look at the arboretum in great detail. We were pleased to have the printed information that Jeremy provided to help locate and identify each tree and, as individual features were pointed out to us, to appreciate the diversity of variety and form. We discovered that at least a

dozen of the original plantings are classified as rare specimens. Identification of, and information about the arboretum should, we feel, be available to all Park users and ways of making this possible are currently being looked at with due consideration, of course, to cost.

The coming of autumn has not daunted the enthusiasm of the Friends who, each Saturday morning care for the Day-Lily Garden. Shrubs and bulbs, all donated by the Friends themselves, have been planted to provide more year-round interest and are helping to transform the semi-derelict site we inherited. Do come along on a Saturday morning between 10.0am and 12 noon to see the Garden and find out more!

Doreen Bennett  
8 Suffolk Road  
KT4 7HG  
020 8337 2366

AUTUMN/WINTER  
2006







WINTER/SPRING  
2006/2007

MIKE, HIS WIFE  
AND DAUGHTER



### FRIENDS OF EPSOM & EWELL PARKS

The stock of trees in Shadbolt Park increased in November when a cedar, three oaks and an ash tree were planted: all were raised from seed by Mike Ford, Chair of the Tree Advisory Board, and donated to our park to celebrate National Tree Week.

Mike and Jeremy Young, the Borough Tree Officer, planted the trees and their expertise was admired by the few onlookers who braved the extremely wet conditions that day. The cedar is of special interest as Mike collected the seed from one of two cedars felled in Epsom by the Great Storm in October 1987: now, twenty years on, we have a fine tree about five feet tall. Mike is asking for practical suggestions to mark the 20th anniversary of that 1987 night of devastation - please let me know if you have any ideas that I could pass on to him.

A further planting of several trees will have taken place by the time you read this, weather permitting, of course. Nine trees, all handsome specimens, including three liquidambers which are renowned for their intense autumn colour, will grace the paddock area and we can all look forward to seeing them mature through the seasons.

The Day Lily Garden volunteers are back in action after a short winter break so, if you are in Shadbolt Park on a Saturday morning between 10.0am and 12 noon, please do pop in to see us and the garden. You will be most welcome!

*Doreen Bennett*  
8 Suffolk Road KT4 7HG  
020 8337 2366





SUMMER 2007

## FRIENDS OF SHADBOLT PARK

A year ago the Friends took on the care of the Daylily Garden in Shadbolt Park and what a transformation there has been since then. The Daylilies, though depleted in named varieties but certainly not lacking in numbers, are thriving and a shrub border has been planted and the efforts of the Friends who volunteer each Saturday morning are evident. As last year, the Garden will be open as the St. Mary's Community Fair is taking place in the Paddock area on Saturday 9th June - so don't forget to visit us before you leave the Park! This may be a little early to see the Daylilies at their blooming best but you will have other opportunities to visit during July and August as the Garden will be open on Saturday and Sunday afternoons between 2 and 4pm starting on 7th and 8th July, so please do come and see us.

Our Friends' group has now been formalised with clear aims and objectives, one of which is to represent the interests of Shadbolt Park users; we are keen to hear of any ideas, suggestions or concerns about our park. Better still, please consider becoming a Friend, helping us to raise the profile of this special place.

### Shadbolt Park Alert!!

Saturday & Sunday 2nd and 3rd June - between 10.0am and 2.0pm.

Come along to Shadbolt Park and help us 'tidy up' our park, tackling those jobs like sweeping, edging and weeding which make such a difference to its appearance. Yes, we know you feel this is someone else's responsibility but let us see what we can do - with your help!

### Help! Help! Help!

Each Saturday morning between 10.0am and 12 noon, Friends of Shadbolt Park can be found in the Daylily Garden doing all manner of jobs to improve the space. We would love you to come along and join our very sociable group and, even if you can only spare half an hour, you will be made very welcome.





...STILL SOME  
JOBS TO DO!







## FRIENDS OF SHADBOLT PARK

Was it the unseasonably warm and sunny April or the deluges that followed later? Or was it the handful of Growmore each plant received in the Spring? Probably a combination of all three helped to make the summer display of our day-lilies so outstanding. No doubts exist, however, about the care with which the Friends tend the Day-lily Garden. Weeding is the most relentless activity but it is so satisfying to see lovely plants free to thrive without invasive competition and regular grass cutting means that the flower beds are shown to their best advantage. As yet untouched areas of the garden will be the next focus for our efforts, hopefully complementing aspects already under way or even completed. For example, two wooden garden seats, both in a very sorry condition and one so damaged we thought it beyond repair, have been painstakingly restored by one of our volunteers after a local resident offered his carpentry skills and we are immensely grateful for the repair undertaken with such craftsmanship – our thanks to you both.

part of Shadbolt Park which, in turn, is just one of the many green open spaces with which Epsom and Ewell are blessed. We have such a variety to choose from ranging from the Horton Country Park Local Nature Reserve to the tiny Elizabeth Welchman Gardens and, if you are unsure as to locations, maps of the Borough are freely available at the Town Hall and Bourne Hall information desks. The autumn is a wonderful time for park exploration so pay a park a visit!

Work continues apace at the Day-lily Garden: we have been open to visitors on Saturday and Sunday afternoons during July and August and those who did come were very complimentary and enjoyed not only the floral display but also the tranquil atmosphere. Our volunteers can be found there every Saturday morning throughout the year between 10.0am and 12 noon – we would love you to come and join us and share in a garden which is so close to home.

*Doreen Bennett*  
8 Suffolk Road KT4 7HG  
020 8337 2366

SUMMER/AUTUMN  
2007



## FRIENDS OF SHADBOLT PARK

The end of the year is traditionally the time for reflection and review and, as our Friends' Group looks back over 2007, its members can do so with much satisfaction. In the main park we have had volunteer task days trying to spruce up paths, defining edges, clearing litter etc., receiving positive comments in the process. By the way, earlier this year, our Council undertook a very extensive shrub and tree pruning programme in Shadbolt Park, the severity of which prompted adverse calls from residents. However, this work was long overdue and the starkness we were left with in the Spring was soon overtaken by the growth encouraged by all that rain during the summer.

Progress in the Day-lily Garden occurs weekly, the Saturday morning volunteers improving the site in general as well as caring for the day-lilies and this is very gratifying for us, as is the real sense of community we all feel. Yes, we all have our own gardens at home to look after but spending a couple of hours a week trying to improve our local environment whilst, at the same time, interacting socially, brings benefits all round.

Our group has been formalised this year with clear aims and objectives and we meet every two months, usually in the new pavilion in Auriol Park when it is available, to consider issues concerning Shadbolt Park and to plan ahead.

Why not come and join us in 2008? We recommence our gardening efforts after a New Year break on 2<sup>nd</sup> February – weather permitting of course – so don't just keep gardening a private affair, come along! For further information, please contact:

**Doreen Bennett**  
8 Suffolk Road KT4 7HG  
020 8337 2366

WINTER 2007

## FRIENDS OF SHADBOLT PARK

How are you faring with your New Year resolutions? Did you aim to get fit, make new friends, help your community? It is not too late to do all three at once by becoming a Friend of Shadbolt Park! We meet on Saturday mornings to look after the Day-lily Garden and, with your help, we could do so much more, especially in the main park itself.

By the way, have you seen the advance publicity for the Chelsea Flower Show in May? This year the signature flower chosen to adorn their literature is a stunning Hemerocallis (Day-lily) called Grace and Favour though, sadly, this is not one of our Shadbolt Park varieties at the moment.

As we gradually leave winter behind this is a lovely time to visit any of the Borough's parks to see trees coming into leaf and bulbs flowering but we hope you put Shadbolt Park first on your list. Also, do try to visit Bourne Hall on March 8<sup>th</sup> and 9<sup>th</sup> for the annual Herald of Spring exhibition with its colourful floral displays, this year in a Roman villa setting, and with so much more to interest all the family.

SPRING 2008





SUMMER 2008

A rare sight!  
Water in the old  
pond

## FRIENDS OF SHADBOLT PARK

Earlier this year our Friends group received the report of a feasibility study, commissioned by us and funded by the local committee (Epsom & Ewell) of Surrey County Council. The study was carried out to assess the current condition of the pond in Shadbolt Park and to consider management options for the pond and its immediate surrounds. The Friends are very grateful to County Councillor Jean Smith for her invaluable help in securing the funding and enabling us to have the considered opinions of a pond conservation adviser. His report is very detailed and offers several options including one to enlarge the pond to its original size as set out by Ernest Shadbolt. Although the various options have not been costed, we believe it likely that even the most modest proposal would cost in excess of £80,000 and, were we to consider proceeding with any of the options, it would be necessary to apply for grants from, for instance, Lottery Funds, with no guarantee that these would be forthcoming.

We would like your views on the possible restoration of our pond. Do you consider it a good idea or is it a thing of the past, not appropriate for our park at this time? Remember, there are at least two further options, i.e. to utilise the limited water retaining property of the present 'pond' to establish a bog garden or to accept the status quo and do nothing. We have a very limited number of copies of the report available should you wish to read the details or you can receive it as an email attachment (see: [www.cuddingtonresidentsassociation.co.uk](http://www.cuddingtonresidentsassociation.co.uk)).

For your pleasure, during July, when the daylilies are at their best, the garden is open on Saturday and Sunday afternoons between 2.0 and 4.0pm.

## Volunteers Needed

- Do you want to help make our park a nicer place?
- Are you concerned about issues regarding the park?
- Are you interested in doing something about the problems?
- Do you want to have a say about park issues?

We would like to hear from you if you can answer 'yes' to any of these questions. Our *Friends Group* would like to include all local residents and every park user in our activities and meetings. The more people involved the less there is for any individual to do!

We meet every Saturday morning between 10am and 12 noon to maintain and improve our very special DayLily Garden within the park, much less

frequently to work in the main park, and every two months or so we gather to discuss park-related issues.

General activities are undertaken by us to help keep our park a pleasant place. If you are interested in joining us to help in any or all of our activities, to attend or receive minutes of our meetings, please contact our Chairman on:

020 8337 2366





## PROBLEMS EXPOSED

### FRIENDS OF SHADBOLT PARK

Favourable comments flowed freely from visitors to the Daylily Garden during our open afternoons in July, the daylilies this year having bloomed spectacularly well.

Our Garden still remains one of the best kept secrets in Worcester Park: those who do come along are often surprised at its existence but then take pleasure from the quiet serenity of the space with its beautiful plants. We have to compete with so many televisual attractions in July – Wimbledon tennis, Grand Prix motor racing and Open Championship golf come to mind – but moments spent in a garden which delight the senses are to be treasured.

Elsewhere in the Park, our venerable mulberry tree (*Morus nigra*) succumbed in June following a period of heavy rain and wind and, no doubt, disease played a part as well. The tree was heavily laden with fruit, unripe at this time of course, and while the loss of any tree is to be regretted, this one had a very special place in the hearts of many residents, especially those who benefit from the fruit. Hopefully, in time, it will be possible to replace

the tree and, as a gnarled bole and dense twisting branches make even a young mulberry tree look ancient, it will soon fit into the landscape.

A task day in June saw Friends of Shadbolt Park, sweeping paths and bed edgings, cutting back shrubs and picking up litter, with the invaluable assistance of members of the Ranger service which supports us in all we do. We could see the improvement made and we hope you did too! We can look forward to improved signage in the Park as the old has already been removed and, hopefully, will soon be replaced by the new.

Finally, we are still awaiting views from residents on the possible restoration of the pond in Shadbolt Park. The background information was published in the Summer 2008 Cuddingtonian and a limited number of copies of a feasibility study by a pond conservationist are available should you wish to see the details – or you can receive the document as an email attachment (go to: [www.cuddingtonresidentsassociation.co.uk](http://www.cuddingtonresidentsassociation.co.uk)). Please, please do let us know what you think!!

SUMMER/AUTUMN  
2008



## FRIENDS OF SHADBOLT PARK

As the year reaches its end, what better time to reflect on the improvements we have seen in 2008? The shrubs which were severely – some would say savagely – pruned in early 2007 have all regenerated, helped, no doubt, by the heavy spring rainfall and the 'opened-up' effect is very pleasing. The Daylily Garden was spectacular for a couple of months whilst the daylilies bloomed but it now offers something extra as the shrub and perennial planting is providing more year round interest.

In the late summer and into early autumn, derelict fencing in the park was replaced, the main gates were painted, previously installed bollards were restored to their upright position where necessary and many new matching bollards added to protect the lawn edges. In addition, the park seats were cleaned and painted and old signage removed prior to the arrival of new: thanks are due to the Council officers for prioritising our work and to

the Ranger service for their efforts in carrying out the work.

As ever, not everything goes to plan and we lost our lovely old mulberry tree but we are still hoping for a replacement. By far the biggest disappointment remains the pond area. Having commissioned a feasibility study by a pond conservationist, we are still awaiting the views of the community – please do spare some time to consider the details of the report available from the address below or as an email attachment (see [www.cuddingtonresidentsassociation.co.uk](http://www.cuddingtonresidentsassociation.co.uk)).

Looking forward now, our Saturday mornings team which will have a break from gardening during January will resume their efforts on Saturday 7<sup>th</sup> February 2009 between 10.0am and 12 noon, weather permitting of course. If you are interested in Shadbolt Park, both past and present, but especially in its future, please think about becoming a Friend of Shadbolt Park – make it a New Year resolution!



**Friends of Shadbolt Park Tombola Stall  
- All sold out**

*From left to right: Pam Thwaites, Janet Gilbert,  
George Crawford and Anna Turner*

AUTUMN/WINTER  
2008





## FRIENDS OF SHADBOLT PARK

Epsom and Ewell are blessed with many green spaces both large and small with Cuddington having the benefit of two lovely parks, Shadbolt and nearby Auriol. To those of us who visit the parks regularly and feel better for it, it came as no surprise to read the findings of a scientific study reported on at the end of last year; lowering of blood pressure and reductions of the harmful effects of stress being but two of the benefits gained by living near and using parks.

Yet do we make the most of these green assets almost on our doorstep? Certainly, the dog walkers are always in evidence in both parks and use of the sports and play facilities is maximised particularly during the school holidays, but how many simply take a walk in the park for the sheer pleasure of it?

Each season brings its own enchantment and even in the depths of winter delights await the visitor. The unrelenting cold snap over the Christmas and New Year period was a revelation in Shadbolt, the frosted filigree branches of the deciduous trees contrasting with the majestic evergreens and the occasional snowfall only added to the magic.

Looking forward now, spring is upon us with its promise of renewal and work has resumed in the Daylilly Garden: do come along any Saturday morning between 10.0am and 12 noon. We would be more than happy to show you around and introduce ourselves!

*For more information, please ring:  
020 8337 2366*

*Doreen Bennett*

## FRIENDS OF SHADBOLT PARK

The heavy snowfall in February and piercing March winds seem but a distant memory now and, judging by the burgeoning daylilies, appear not to have done them any harm. Of course, their peak flowering time is in July when we expect our usual spectacular display but we also have a great diversity of plants creating interest throughout the year, so do come to visit the Daylilly Garden any Saturday morning between 10.0am and 12 noon to see the Friends at work tending the beds.

For the duration of the Community Fair on 20<sup>th</sup> June – held in the Paddock area – the Daylilly Garden will be open so don't forget to call in before you leave the Park. The following Saturday (27<sup>th</sup> June) the Friends will be putting down their garden tools in order to join local historian David Rymill as he leads a circular walk of approximately two hours,

starting from the Daylilly Garden at 10.30am. For your pleasure, in July, we are again opening the Garden on Saturday and Sunday afternoons between 2.0 – 4.0pm. We hope to see you there!

Elsewhere in Shadbolt Park, I'm sure many of you will have fond memories of the old mulberry tree which, sadly, succumbed to time and the elements last year. A young replacement tree has been planted nearby and it will be interesting to note how soon the tree bears fruit.

For further information about Shadbolt Park and the Daylilly Garden please contact:

Doreen M. Bennett  
8 Suffolk Road, KT4 7HG  
020 8337 2366

SPRING 2009



## FRIENDS OF SHADBOLT PARK

What a good day was had by all on 20 June at the annual Cuddington Fun Day organised by St. Mary's Church and while the events were taking place in the Paddock, our Daylily Garden was open to visitors. Some had seen the garden before but many were surprised to find us, even though they had lived in the area for years. The sight that greeted old and newcomers alike was spectacular as the daylilies were even better than in previous years.

Sadly, just the following week, we were mourning the sudden death of Helga, one of our staunchest supporters. Besides gardening, Helga helped to restore the wooden seats we have and she had just finished painting our little summerhouse, donated to us by local residents. She loved having 'a project' and not only did we benefit as she also contributed her time and efforts to helping the Countryside Team and the Ranger Service on their special task days. Helga had been a Friend of Shadbolt Park since its inception, a true devotee of the Daylily Garden and, not only have we lost a friend, but the wider community will miss her too.

At the end of June, on a very hot Saturday morning, David Rymill led a fascinating local history walk and used the Daylily Garden as his starting point. Our gardening group was joined by others and as we progressed through Shadbolt Park and Edenfield Gardens to The Avenue and then on to the welcome cool of St. Mary's Church, David drew our attention to so many points of interest, many continuing the horticultural theme. We our most grateful to him for sharing his wealth of knowledge with us.

As you read this, the peak flowering time of the daylilies is over but a few do persist into Autumn. Like so many plants hardy and perennial, our gardening team just keeps going! So you can find us each Saturday morning between 10am and 12 noon at the Daylily Garden and, whatever your interest in Shadbolt Park, be it the flora, the wildlife or the future of the pond area, you will be made very welcome if you join us!

Doreen M. Bennett, 8 Suffolk Road,  
KT4 7HG  
020 8337 2366



SUMMER 2009

THE SUMMERHOUSE AND BENCH  
WERE TWO OF HELGA'S PROJECTS



## RESTORING SHADBOLT POND

by Carol Williams

Some residents may remember that the pond in Shadbolt Park used to be a lifeline for local wildlife, although a decade or so ago it began to dry out, due to cracks in the concrete liner. Perhaps not surprisingly, the Council have been unable to allocate funds for this to be repaired, as it is not one of its priorities.

However, an approach to Surrey Wildlife Trust brought a very supportive response. The Friends of Shadbolt Park commissioned a report on the pond in January 2008 and, although little was done then due to lack of funds, the information available within this report has proved invaluable.

A meeting, which included representatives from the Council, the Surrey Wildlife Trust, the Lower Mole Countryside Projects, Friends of the Park and Councillor Robert Foote, took place on site in October, when it was agreed that restoration was possible given some Council input and a group of volunteers. Grants to cover the cost of materials and machinery might be available if we could demonstrate sufficient local interest and willingness to get stuck into the work. The

the pond area which we would hope to start early in 2010. The Lower Mole Valley team who regularly undertake work of this kind will provide advice and experienced help.

Many people will know that our wetlands have diminished alarmingly in recent years, so every little urban pond, in gardens and parks, is a vital resource for numerous native species that depend on fresh water for part of their lifecycle. Once restored, Shadbolt Park pond would be an important link in a chain of 'breathing places' for our wildlife, contributing to biodiversity.

A meeting is planned for 11am on Sunday 13 December at Shadbolt Park House Surgery so please do come along. Anyone interested who would like to contact me may do so by email – [carol020754@gmail.com](mailto:carol020754@gmail.com) – or telephone 0208 337 3722. In the meantime the good news is that, during November, Waitrose in Worcester Park is featuring this in its green token scheme to support local causes, so I hope that those of you who shop at Waitrose placed your tokens in favour of this project – thanks!

### Restoring a pond

by Carol Williams

Once upon a time, Shadbolt Park (bordered by Edenfield Gdns, Salisbury Rd, Shadbolt Close and Suffolk Rd) had a pond that was a lifeline to local wildlife. About a decade ago it began to dry out due to cracks in the concrete liner.

Epsom and Ewell Borough Council, who own the park, had no money to repair it and this is still so.

Recently I wondered if I could get help from the Surrey Wildlife Trust, as a dried out pond is not much use really, and their response was very supportive.

Along the way I discovered that the Friends of Shadbolt Park had commissioned a report



on the pond in Jan 2008, and although little was done back then due to lack of funds, the information available within this report has proved invaluable.

A small meeting of

representatives from the Council, the SWT, the Lower Mole Countryside Project and the Friends of the park was held on site early in October. We agreed that restoration was possible, given some Council input and a group of volunteers. Grants to cover the cost of materials and machinery might be available if we could demonstrate sufficient local interest and willingness to get stuck into the work. The first job would be scrub clearance around the pond area which we would hope to start early in

2010. Advice and experienced help would be provided by the Lower Mole Valley team who regularly undertake work of this kind.

Many people will know that our wetlands have diminished alarmingly in recent years, so every little urban pond, in gardens and parks, is a vital resource for numerous native species which depend on fresh water for part of their life cycle. Restored, Shadbolt Park pond would be an important link in a chain of 'breathing places' for our wildlife, contributing to biodiversity.

We plan to hold a meeting on Sun 13 Dec at 11 am in the surgery within the park grounds (entrance on Salisbury Rd). So if you'd like to give this story a 'happily ever after' it would be great to get your support. Leaflets and posters advertising this will be out shortly. In the meantime anyone interested who wants to contact me may do so by email: [carol020754@gmail.com](mailto:carol020754@gmail.com) or telephone 0208 337 3722. ■

WINTER 2009



## FRIENDS OF SHADBOLT PARK

By now, the gardening tools will be safely stowed away – hopefully all cleaned and primed for action next year – but it is always useful to keep a broom handy as the leaf fall seems never ending. Where possible, compost the swept leaves and, in about eighteen months, they will have composted down, although oak and beech leaves do take longer. A very convenient method of storage is to use wide mesh jute sacks available for this purpose: just stuff them full of leaves, stow them away out of sight but open to the elements and the jute rots down at the same time as the leaves – a very eco-friendly source of soil conditioner.

Now is the time to plan for next year: we can pass many absorbing hours consulting seed and plant catalogues and hope to avoid previous mistakes and bad buys in the quest for the garden of our dreams.

There are still no local gardens open under the National Gardens Scheme which is a shame. Perhaps the vetting system before a garden can make it into the famed Yellow Book is too daunting but, more informally, remember that anyone can open their gardens to friends and neighbours for a couple of hours in

order to raise funds for a favourite cause. Some local publicity and having plants available for sale, grown from seeds and cuttings, will guarantee visitors.

In Shadbolt Park, several conifers near the Edenfield Gardens entrance have been scheduled for removal and a replacement planting of four Sorbus aucuparia – known to most of us as Rowan or Mountain Ash – will improve that area for bird life and also give visitors a better experience. Our Daylily Garden is ready for winter and while some plants have lost their leaves, a few Daylilies retain evergreen foliage. Weather permitting, the first Saturday in February will see our Friends' volunteers spring into action although the plants may take a little longer! We have a lovely shrub border with several impressive evergreens so there is always something to see. If you haven't already done so, make 2010 your year to visit Shadbolt Park and the Daylily Garden – and, who knows, you may not be able to resist the temptation to volunteer yourself! Any enquiries about Shadbolt Park are welcome.

**Please contact Doreen Bennett at:  
8 Suffolk Road, KT4 7HG. 020 8337 2366**



WINTER 2009

## FRIENDS OF SHADBOLT PARK

Despite talk of global warming, snow has been a feature for the second successive winter and, once again, it worked its magic on our park with the young and young at heart enjoying the fun of snowballs, snowmen and sledging. The deciduous trees with their tracery of branches and the majestic conifers looked beautiful against the sky and the snowy backdrop.

We had good news that our stock of conifers is to be increased but we have to be patient! During a visit last Autumn to Bedgebury Pinetum in Kent, Jeremy Young, our Borough Tree Officer and Michael Ford, Chairman of our Tree Advisory Board, were given fourteen young trees which, when a little more mature, will be planted out in Nonsuch Park and Shadbolt Park. Some of the specimens are extremely rare and, coming from such a reputable source, will be prized by all of us.

Bedgebury National Pinetum was founded in 1924 but some of the larger specimen trees dating from 1850 are still flourishing. The conifer collection there has been listed as the best in the world by the International Dendrological Research Institute and, in addition, many deciduous trees including rare oaks and maples abound plus a wide range of rhododendrons which flower from January to August – well worth a visit.

After our winter break, we welcome Spring in the Daylily Garden with renewed enthusiasm, with fresh ideas and projects in mind to keep us all busy. Would you like to come and join us? You will always find us there on Saturday mornings between 10am and 12noon. We'll be looking out for you!

**Please contact Doreen Bennett at:  
8 Suffolk Road, KT4 7HG  
020 8337 2366**



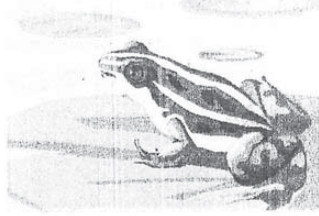
SPRING 2010



## SHADBOLT PARK POND RESTORATION

A combination of donations and successful grant applications means that we will raise enough funds to restore our pond—I would jump for joy had I not broken my ankle! On 28 February (before my accident rendered me immobile for weeks) we had a highly successful and enjoyable volunteer day, clearing vegetation. The pouring rain failed to dampen our spirits and we can't wait to get to work again.

Before that we have the Cuddington Fair on Saturday 26 June in Shadbolt Park paddock. Please come and visit us at our stall and learn more about this project.



The real work of pond restoration begins this autumn, so if you want to get mucky with us, please contact me and get your name on our list, in case you should somehow miss the publicity for the working parties. As before, all tools will be provided and experienced people will be on hand to direct and guide us.

I am absolutely thrilled at the level of support and interest this project has received from so many local people and look forward to meeting many more of you and working alongside you.

Carol Williams 020 8337 3722

### Pond matters

by Carol Williams

About 20 people turned out on a very wet 28 Feb to clear vegetation around the pond in Shadbolt Park - stage 1 of the restoration work.



Despite the rain and mud we were a merry band, helped by chocs kindly brought along by one of the volunteers, and a cuppa in the Health Centre afterwards. Thanks to a local Scout Group for loan of an urn, and to Julia, for turning out on her day off to let us into the building.

Our next volunteer day is likely to be early June, to remove an old wooden fence and clear any regrowth of brambles etc. By then we hope that EEBC will have completed their part of the work

On 26 June we are having a stall at the Cuddington Fair to help raise the money needed. Please come and support us there.

If you would like to help with a personal donation to the project, this would be much appreciated. We have already collected over 600 pounds, and been allocated a grant by the SCC, but we just need a little more...Cheques made out to

Shadbolt Park Pond Fund may be sent to St Mary's Church, The Avenue, Worcester Park. (Thanks to the vicar there for use of this address).

The main work of building the new pond will take place in Sept. This is likely to be 3 consecutive weekdays and a Sunday,

the timing dependant on the Lower Mole ▶

Countryside Management Project who are experts in this field.

Please keep a watch for our posters and articles advertising the dates, or contact me to register your interest so that you don't miss out!

Finally, a word about the Friends of Shadbolt Park, whose help has been invaluable to this pond project. They are a friendly bunch who have welcomed me into their midst and can be found every Saturday morning between 10am and 12 noon in the garden behind the Health Centre in the park. We carry out various gardening tasks together. Anyone is welcome so please come along and meet us all and get involved in looking after Shadbolt Park. If you live in the area and have never taken a walk through this beautiful little park that nestles between Salisbury Rd and Edenfield Gdns, please make the time to do so soon. Why not a Saturday morning, so that you can pop into the garden and meet the Friends?



SPRING/SUMMER 2010  
NEWS ON THE POND &  
PREPARING FOR A LAWN!





SPRING/SUMMER 2010  
CORRECTLY LAID TURVES,  
THE FINISHED LAWN  
& MORE TIDYING UP

## FRIENDS OF SHADBOLT PARK

Work resumed in the Daylily Garden at the beginning of February after our New Year break: by then the snow had cleared and the weather was generally dull and cold. A couple of weeks later the ground was hard with frost and the water barrels iced over and then came the rain, seemingly, for weeks on end! Regardless of the weather, our stalwart Friends' group has achieved so much already this year. The 'wild' area behind the shed is still wild, but less so, as new composting areas have been created which are already being put to good use. All the established beds have been cleared of leaves and hoed, some new planting has taken place and the Spring bulbs have bloomed well, albeit late. Beside the shed was an area of very rough 'lawn' which was sitting on black plastic, this presumably used as a weed suppressant, ineffectively, many moons ago. We decided 2010 would be the year when we would tackle this area and much earth moving has been necessary

to remove the black plastic; the ground has been levelled and, by the time you read this, a proper lawn will have been created. We hope this will add to making your summer visit to the Daylily Garden an even more pleasurable experience. Of course, if you can't wait until then, come along any Saturday morning between 10am and 12noon to check on progress.

Elsewhere in the Park, the future of the seasonally planted beds has not yet been determined. As a cost-saving measure, some beds throughout the parks and open spaces in the Borough are to be grassed over and perennial planting is also being considered for some of them. For many, many years seasonal bedding has been a feature of Shadbolt Park, but for how much longer? We shall have to wait and see.

**Please contact Doreen Bennett at:  
8 Suffolk Road, KT4 7HG  
020 8337 2366**



## FRIENDS OF SHADBOLT PARK

After a late start – coming into flower almost two weeks later than last year – the day lilies burst into bloom at the end of June and have been spectacular. Their colour spectrum is broad so there is something to please most tastes, literally so, if you add the flower buds to your salad! This year, during our open Saturday and Sunday afternoons in July, we have made available a visitors' book and already some very complimentary remarks have been recorded about the Day Lily Garden; these are very warmly received by all the volunteers who look after this space. Another new feature this year, and a work still in progress, is our 'bug haven'. Technically known as a hibernaculum, think of it as a high rise block for bugs and small mammals to shelter and over-winter

in. Various habitats are being created using diverse materials and in years to come we may even have stag beetles making their home here!

With grass cutting now 'in house' and the flower bedding supplied and cared for by a new contractor, Shadbolt Park is looking better than in recent memory although the prolonged drought in high summer was challenging. Have you noticed the improved state of the Park? Does it measure up to your expectations? We welcome your comments and you can find us in the Day Lily Garden every Saturday morning between 10am and 12 noon.

**Please contact Doreen Bennett at:  
8 Suffolk Road, KT4 7HG.  
020 8337 2366**



SUMMER 2010

SUMMER SHOW:  
THE STARS!





## Pond Life - get ready to help

by Carol Williams

Dates for your diary: 7,8,9 and 12 September.

On these 4 days, together with the team from the Lower Mole Countryside Management Project, we will rebuild the pond in Shadbolt Park. Please come along and help!

Work will begin at 10 am and end around 3.30. Join us at any time for as long as you like. Please come, even if you only have half an hour. Children are welcome on the Sunday (12th) but on Tuesday to Thursday (7-9th) there will be machinery on site so it would not be advisable to bring children on these days. Trained people from the LMCMP will operate the excavators etc but there will be manual tasks for anyone who wants to lend a hand.

Doing this work will inevitably create some temporary mess in the park, though we shall, of course, try to keep this to a minimum and clear up afterwards. Anyone using the surgery on 7,8 and 9 September should be aware that the arrival of vehicles with supplies for the pond work will mean that access and parking near the Salisbury Road entrance to the park will be more difficult whilst the lorries are making their deliveries. I hope you will bear with us on this.

Thankyou to everyone whose gifts of money and items to sell has helped to make this project a reality. We raised over 200 pounds on our stall at the Cuddington Fun Day on 26 June. A huge thankyou to the 2nd Cuddington Brownies who gave us a cheque for 50 pounds! They had held their own fundraiser and our pond project benefitted. It is so wonderful to have so many people obviously keen to support us.

At the time of writing the trees that need removing from the pond site are still standing but I have been given many assurances that the work will be carried out in time for the restoration in early September. I regret that trees must be felled, as I love trees, but heavy shade is detrimental to pond ecology so I accept, with sorrow, that they must go and I hope that, perhaps, we may plant some more elsewhere in the park to compensate after the pond is rebuilt. Anyone out there interested in being part of a tree planting initiative?(!)

Our new pond will be smaller than the present one and will have gently sloping sides to allow wildlife to enter and exit safely. It will be rain fed and filled, so very reliant on the vagaries of our weather, as are all natural ponds. If there is no rain in the days following our work,



it won't look very much like a

functioning pond at first, but we must all have patience, sure in the knowledge that once the rain has filled it, it won't leak away again within

a week or two, as before. We will not be filling it with tap water as this contains chemicals that can be harmful to some wildlife.

By next Spring the new pond should be a welcoming habitat for amphibians, insects and nesting birds and we shall be able to stroll along and enjoy the sight of it thriving. I hope to continue to write about its progress in this magazine from time to time, and we will need people to keep an eye on it so that rubbish or any other problems can be dealt with swiftly. I hope it will be a thing of beauty that we will all respect and care for.

In the Summer months the water level in the pond will drop. This is normal with all natural ponds and is due to evaporation. By this time all spawn will have hatched and the tadpoles grown and left. Hopefully the Summers will not be so dry and hot as to cause all the water to disappear but this is a possibility and we should be prepared for this, knowing that all should come right again before the next Spring, provided that there is adequate rainfall in the Autumn and Winter. Unlike now, when our 'pond' is seldom a pond at all!

I hope to see as many of you as can spare us a bit of time on 7,8,9 or 12 September. The main day for local volunteers is Sunday 12th from 10 am. You do not need to know anything about pond creation as Nick Owen from the Lower Mole Project will be there to guide and advise. All tools and equipment will be provided also. We just need YOU.

Please contact me if you have any questions and, above all, come along and help when you can.

Carol Williams 0208 337 3722  
carol020754@gmail.com ■

AUTUMN 2010





## Pond Life - thank you!

by Carol Williams

Firstly, a whopping thank you to WP Life for giving me so much space to publicise my pond project. It has brought forth an amazing response - I had over 50 people turn up for the volunteer task day on 12 Sept! Clearly people read it, so anybody needing support for a local event, don't hesitate to send details to Jenny.

Advertisers too! The magazine is delivered to over 6,300 homes every month and copies placed in libraries, churches and other public places, including Waitrose, so plenty of opportunity for your piece to be seen by many eyes.

Thank you also to Nick Church from AC Gardening who kindly donated some topsoil and then he and his family spent all day working with us.

Do, please, wander along to the park and see what we have done. It was hard work, and took 4 days, but the camaraderie was brilliant and I was thrilled that so many local people came along and worked so tirelessly.

Thanks also to Surrey County Council who awarded us a generous grant towards the cost of the project.

To thank all of you, and to celebrate our new pond, we are having a social on Sunday 17 October at 11.30 am in St Mary's church hall, The Avenue, Worcester Park. We will provide tea, coffee and cakes, and everyone who has helped in any way is invited to join us.



Before that, in the park, at around 10.45 am, we will officially mark the start of a new phase in the pond's history.

The Mayor of Epsom and Ewell will now be taking part in our opening ceremony.

There will need to be a Phase 2 to complete the task properly, but more of that when we have arranged the timetable with the Lower Mole Countryside Management Project. They have been brilliant, we could not have done any of this without their guidance and expert team work. We have also received tremendous support from The Surrey Wildlife Trust and the Park Rangers.

So, thank you all, once again, I never knew there were so many wonderful people in Worcester Park until I started this project. It has been a real privilege to meet you and I hope very much that you will stay interested in the pond, helping with Phase 2 and watching its progress in the future.

See you on 17th!

Carol Williams.

Carol Williams 0208 337 3722  
carol020754@gmail.com ■

AUTUMN 2010

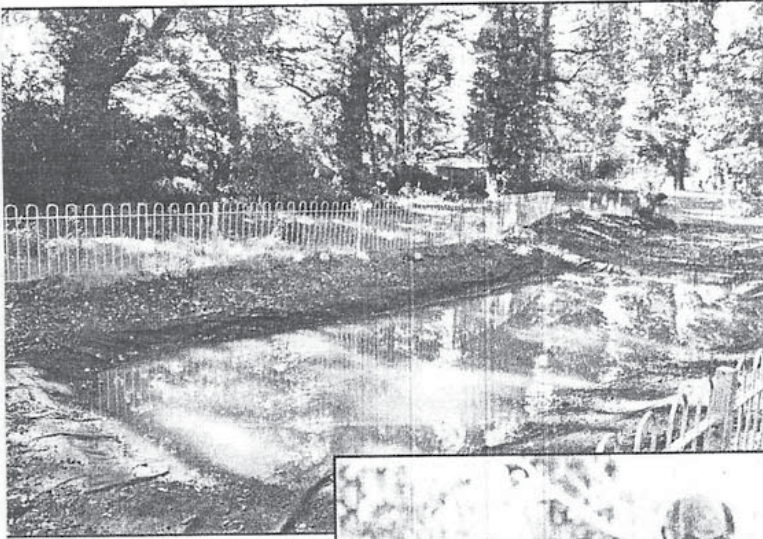




## RESTORING SHADBOLT PARK POND

September was pond restoration month and a group of lovely enthusiastic people turned out to help; some even came on all four days! A fantastic team effort, so a big thank you to all.

On 17 October the Mayor came to formally 'open' the new pond and give a few speeches of appreciation to all who had contributed time or money or both.



Afterwards a lot of us went to St Mary's church hall to celebrate the completion of Phase 1. Thanks to Jenny Sadler for the delicious cup cakes! The Surrey Wildlife Trust, the Rangers and the Lower Mole Project provided an excellent display of the work carried out, with information about Phase 2.



By the time you read this, Phase 2 - creating a wildlife boggy area with donated plants on Sunday 7 November will be past. Hopefully all those who wanted to help will have seen our posters and come along.

Anyone interested in joining a working party for ongoing maintenance of the site, please contact me. We will meet

at the pond on Saturday mornings between 10.30 and 11.30, and also on one weekday at the same sort of time - day yet to be decided. Thank you, once again, to everyone who has given so generously to this project over the past year.

Carol Williams 020 8337 3722  
email: Carol020754@gmail.com

AUTUMN/WINTER 2010



## FRIENDS OF SHADBOLT PARK

Balmy summer evenings – yes, there were a few this year – are not easy to recall now that winter is upon us, but one at the end of July does stay in the memory. A few local residents led by a very knowledgeable environmentalist gathered to determine bat activity in Shadbolt Park. After a brief survey of the park to check possible roosting sites and flight lines we waited for dusk to fall and each equipped with a bat detector, we tuned into different frequencies to detect activity. Bats emit ultrasonic sounds that bounce off solid objects, including prey insects, enabling them to hunt and navigate by echo location. Too high pitched for the human ear to pick up, the bat detectors can make these sounds audible. By the end of the evening four species, including two uncommon ones had been detected although not necessarily seen by us hopeful bat watchers! Now when insect prey is difficult to find, the bats will hibernate but come next spring they will emerge from their torpor with the newly restored pond an environmental bonus for them.

In the interests of economy and sustainability proposals from our Council to remove some bedding schemes from parks and open spaces have inevitably affected Shadbolt Park. Two main beds

are to be retained and planted up twice yearly but others are to be allowed to succumb to the surrounding vegetation. However, we know now that one of the three beds is to be turfed over and another two are to be planted sustainably with 'architectural' plants which are to be a permanent feature. A large bed at the rear of the medical practice remained a problem and our Council have expressed thanks to the Friends of Shadbolt Park for their willingness to adopt this space – to clear, plant it up and maintain it. An initial 'task day' to clear the space will hopefully kick start and further days for planting will take place next spring. As we already maintain the Day Lily Garden this new project needs extra help along the way whether it be advising, gardening, planning a planting scheme, or funding the purchase of shrubs; so please do get involved, there are so many ways to help. We are at the Day Lily Garden until the middle of December and then restart on 5 February, weather permitting; do call in but first register your interest now by contacting me. Shadbolt Park needs you!!

**Please contact Doreen Bennett at:  
8 Suffolk Road, KT4 7HG.  
020 8337 2366**

AUTUMN/WINTER 2010





# The frogs, newts & bugs arrive!

by Carol Williams

It is now 7 months since Shadbolt Park pond was restored, and 5 months since we created a bog garden adjoining it. A slightly anxious time followed, as we waited for the rain to fill it, and we all got very excited when it became a muddy puddle that gradually expanded, and the water stayed there! After years of watching it leak away and strand our wildlife, this was a joy to behold.

On 14 February (I kid you not!) frogs came and courted and laid their spawn. They chose to adorn the water lily with it and, in the sunshine, entertained us with their antics. People exercising their dogs in the park stopped to admire. "Isn't Nature wonderful?" one lady remarked. I couldn't agree more.

We have since seen newts in the water and some interesting beetles, and small birds bathing in the shallows. Life abounds, as we hoped it would.

Some of us are to be found at the site on Wednesdays and Saturdays from 10.30 to 11.30 am, so if anyone would care to pop along to see what we have done and chat about the project, we'd be pleased to see you.

We very much hope to increase the biodiversity in the park by providing this body of water, and by allowing some of the grass to grow long and planting wildflowers. All this will encourage insects, which are vital to the life cycles of amphibians, bats and birds.

We have added a couple of water lilies to enhance the appearance of the pond and to give the animals somewhere to hide, and we have also put in a small amount of native hornwort, both to oxygenate the water and to provide some vegetation for newts to lay their eggs on, but ideally we wish it to be colonised by the creatures and plants already a part of the park's ecology, so we will now not be adding anything else. Fish would eat the tadpoles, rather defeating the object of creating a wildlife pond! We also need to be very careful not to introduce invasive plants, viruses and non-native animals to the ecosystem.

We very much hope that everyone will enjoy the new pond and respect the wildlife which uses it. We also hope it will inspire people to provide space for wild creatures in gardens, parks, churchyards, school grounds and anywhere else they can think of! With so much land covered by

## places

housing and roads, many species are in trouble, so any small help they can get would make

a difference to their survival in urban areas. There is plenty of information on the internet about wildlife gardening, so please do check it out and have a go. Help and advice can also be obtained from the Surrey Wildlife Trust at School Lane, Pirbright, Woking, Surrey, GU24 0JN and this year's BBC Springwatch programme will most likely, as usual, give us excellent ideas for improving wildlife habitat in our neighbourhoods.

We have commissioned a stunning display board from the Day Centre workshop at St Ebba's, which we hope to erect on the site in the

course of the next month or so.

Thankyou to everyone who helped create the new pond. Please do come and visit us soon!

Carol Williams,  
Friends of Shadbolt Park (Pond Group). [WPLife](#)



SPRING 2011



## FRIENDS OF SHADBOLT PARK

Following the planting of three *Betula jacquemonti* (silver birches) in Shadbolt Park in November, a further addition of two trees in the Paddock area will follow later in the year. The Tree Advisory Board – a partnership between the local community and Epsom & Ewell Borough Council to safeguard the trees in the Borough – is providing the funding (using about one half of TAB reserves) and the Friends were invited to choose the varieties to be planted. Our Borough Tree Officer, Jeremy Young, gave us information about trees originally planted by Ernest Shadbolt but which have since disappeared and from the list we chose *Liriodendron tulipifera* (tulip tree) and *Quercus coccinea* (scarlet oak). In the wider community many local roads will benefit from the Borough Tree Planting Programme this year, with varieties including *Sorbus*, *Prunus*, *Acer* and *Betula*. These young trees, whether in the Park or on street verges will require watering in addition to what falls from the sky. We will be ready with our watering cans in the Park and hopefully householders benefiting from a tree planting near their properties will do likewise, especially in really dry spells.

Our Saturday morning working parties in the Day Lily Garden have resumed after the New Year break, please do drop in to see us any time between 10am and noon; you will be most welcome. We teamed up with the Ranger service at the end



Councillor Graham Dudley with residents after the planting of the silver birches.

of January for a task day to commence initial clearance of the 'adopted' bed in the Park. Previously this bed was seasonally planted but sadly, no longer and, without intervention, would have been overtaken by the encroaching vegetation. We are always grateful for the extra man/woman power our excellent Rangers provide and, on this occasion, one of the team was actually off duty but helped anyway on his rest day. Eventually after more clearance, the bed will be planted by us with shrubs and, as mentioned in the last issue, your assistance would be greatly appreciated regarding choice of shrubs and their planting and maintenance. Need to know more about Shadbolt Park or the Friends group? Please do get in touch or just come along.

Please contact Doreen Bennett at:  
8 Suffolk Road, KT4 7HG  
020 8337 2366



## FRIENDS OF SHADBOLT PARK

The harsh winter does not seem to have affected the day lilies, which identify our special garden in Shadbolt Park, all clumps are freshly green and bulking up really well. In July, when flowering time peaks, we expect the usual spectacular display which, if you haven't witnessed it before, will be a delightful surprise. Elsewhere in the Day Lily Garden we have acquired more shrubs and perennials, so whatever time of year it is a place of interest. Our thanks are due to the Grounds Maintenance team of Epsom & Ewell Borough Council not only for the more frequent grass cutting than in previous years but also for the planting of 14 Escallonia Apple Blossom to screen the less than lovely substation located in a corner of the Paddock; these evergreen climbers providing glossy dark green leaves and, in early and mid-summer, pink flowers with white centres. The planting planned for this spring of two "heritage" trees in the Paddock has had to be delayed because of difficulty in sourcing one of our selections, the Scarlet Oak. Jeremy Young, the Borough Tree Officer, is confident that obtaining a specimen tree will not be a problem at the end of the year, which is, after all, the optimal time for tree planting. Our adopted shrub border in the Park is also scheduled for autumn/winter planting, we are currently

finalising our choice of shrubs to give maximum interest throughout the year and our selection will be sourced by our Council, with all costs being borne by the Friends of Shadbolt Park and their supporters.

How often do you read of the results of academic research, which just seems to confirm the obvious? Researchers from two American universities, having studied the behaviour, activity and attitudes of nearly 300 men and women, confirmed previous findings that gardening is one of the best ways of keeping active later in life and "it provides participants with opportunities to reconnect with themselves through nature and a healthy activity to enhance their quality of life." Your views on this subject are welcome!

To see how the Day Lily Garden is progressing just come along any Saturday morning between 10am and 12noon and also on Saturday and Sunday afternoons in July for the lilies at their splendid best, we'll be open between 2pm and 4pm on those days. Need any more information? Please contact me.

Doreen Bennett  
8 Suffolk Road KT4 7HG  
020 8337 2366

SUMMER 2011

## SHADBOLT PARK POND

In February frogs arrived at the new pond and laid heaps of spawn. They entertained many park users with their antics over the water lily. Newts followed soon after, and then the toads.

The recent prolonged dry spell has caused a lot of work for the small volunteer group who manage the site, as we need to water the plants we have put in and top up the water level twice a week. The lack of rain makes life very hard for our wildlife, so the pond is truly a lifeline for them. Watching the birds taking a drink and a bath is as rewarding as seeing the tadpoles darting about beneath the surface. We know from a bat survey last summer that both species of pipistrelle use the park, so the water will be much appreciated by them as well, both for drinking and for the insect food it encourages.

The area around the pond site, behind the railings and on either side of them, is being left to nature as far as possible. Long grass and common native plants

are being allowed to grow, so that there is plenty of cover, and insect food for the animals that need it. Ivy, much maligned by some, is actually one of the most beneficial wildlife plants we have. It provides shelter and food all year round.

Our new display board has been made for us in the St Ebba's day centre workshop and is to be unveiled by the Mayor on Wednesday 22 June at 11am. Why not join us? We will be displaying more examples of their work - bird boxes and feeders - on the Friends' stall at the Cuddington Fair on 18 June.

We work on the pond site on Wednesdays and Saturdays between 10.30 and 11.30am. We would love to see you, whether you just want to chat about the project, read the notices on our board, or join the volunteer group, so please visit us soon.

Carol Williams, Friends of Shadbolt Park (Pond Group).





## SHADBOLT PARK

**Friends:** Day lilies have been cultivated in China for thousands of years, grown as food as well as for their medicinal value; their blooms are said to be tasty and nutritious and their roots and crowns used in medicine. Our Day Lily Garden is a feast for the eyes, each plant a delight and viewed en masse the variety of colour and form is dazzling. They are suitable however for many settings, landscapers using them as companion plants to roses and irises for example. Our blooms are over for this year, yes it is a very short season but their radiance will live long in the memory. Elsewhere in the Day Lily Garden the perennial planting has increased and the addition this year of pots of pelargoniums has contributed to a brighter display than ever.

In the wider park the bedding plants and phormiums all add to the vibrant scene but, sadly, the escallonia border in the paddock is reduced by three plants due to theft. Seriously folks it is green fingered park users we want to encourage not light fingered ones; our friends volunteers wear high visibility jackets when working in the park or paddock so it should be easy to spot any illicit 'gardeners' not similarly attired.

In addition to caring for the Day Lily Garden we are creating a new shrub border from scratch. We water and mulch newly planted trees and generally complement, where we can, the work of the grounds maintenance staff and the ranger service. On 26 November, during National Tree Week, three specimen trees, black walnut, scarlet oak and tulip tree, donated by the Tree Advisory Board

wildflowers into the areas left bare by the restoration last autumn.

At the moment there is not much to do, so we have the joy of looking to see what plants have grown there, and spotting interesting insects (and the odd tiny frog). Recently we saw a beautiful scarlet beetle, a cardinal beetle, now quite rare. We have watched dragonflies dance over the pond surface and then dip to lay eggs in the weed, seen tiny

are to be planted so come along for a masterclass in tree planting!

Offers of help are welcome, regular or occasional. Please call into the Day Lily Garden between 10am and 12 noon any Saturday morning.

**Doreen Bennett, 020 8337 2366**

**Wildlife Area:** The pond was restored primarily for the benefit of wildlife, and the aim of the very small band of volunteers who meet there twice a week is to improve diversity, giving as many species as possible the chance to thrive. Come along between 10.30 and 11.30am on Wednesdays and Saturdays if you'd like to get involved.

The area behind and to the side of the railings is being left to Nature so that native plants can flower and set seed, providing habitat and food for a variety of animals. Some people will view these areas as an untidy mess, but there is little for wildlife in a neat and manicured space.

Some insects can only breed if a particular plant is available, for Red Admiral and Small Tortoiseshell butterflies it is nettles. Luckily, nettles are vigorous so we still have these lovely butterflies, but other specialist insects are in serious trouble. Without sufficient patches of wild, their existence is threatened. This passes up the chain meaning less food for birds, reptiles, amphibians and small mammals also affecting the larger animals, which eat them. So, for want of a 'weed', animal species may be lost.

During April we had to top up the water level in the pond to save the tadpoles; we have also worked hard to get grass and

frogs emerging from the water and newt tadpoles swimming about. We are still trying to identify the wild plants around the site; 'fat hen', scentless mayweed and scarlet pimpernel to name but a few. There is blanket weed in the pond, but it is being used by so many creatures we are reluctant to disturb it at present. We plan to attack it in the autumn, when we will remove the fallen leaves.

**Carol Williams**



AUTUMN 2011



# Commemorating a centenary with trees

Three trees have been planted in Shadbolt Park to commemorate the centenary of the land's purchase by Mr EI Shadbolt in 1911.

A scarlet oak, black walnut and tulip tree were planted by the Epsom and Ewell Tree Advisory Board and the Friends of Shadbolt Park, Worcester Park, on Saturday, November 26.

Mr Shadbolt was the vice-chairman of the Metropolitan Public Gardens Association and planted many rare trees and shrubs in his grounds over the years, many of which survive today.

After Mr Shadbolt's death, the council purchased Shadbolt Park in 1936 from his niece for £3,500.



Green: Mike Ford, Chairman of Tree Advisory Board, George Crawford, Cuddington ward councillor, Judith Glover, Cuddington ward councillor, Doreen Bennett Friends of Shadbolt Park and Jeremy Young, Epsom and Ewell's tree officer



## AUTUMN 2011

SOME OF THE TREES PLANTED : JUGLANS NIGRA (BLACK WALNUT)  
 LIRIODENDRON TULIPIFERA (TULIP TREE)  
 QUERCUS RUBRA (SCARLET OAK)



## SHADBOLT PARK

**Friends:** As the year ends, any review of the last twelve months would have to make mention of the topsy-turvy weather we have all experienced. Summer arrived in March and carried on into April, then autumn chill was noticeable on many summer days with October proving to be the warmest on record. As I write, one of our day lilies is still blooming well, fortuitously named "Happy Returns" its yellow flowers just keep coming. Our shrub bed planting may have to be delayed due to difficulties in sourcing some of the specimens but there was no doubt about the tree planting in the Paddock area on November 26. As we have only recently discovered that Ernest Shadbolt acquired the land for his park in 1911, we are dedicating the tulip tree, scarlet oak and black walnut to his memory, with gratitude for a hundred years of his and our park.

Our Ranger Service will be conducting surveys in the open green spaces in the Borough next year, so don't be surprised if you are asked to comment when visiting Shadbolt or any of the other parks with which Epsom & Ewell is blessed. The Friends hold quarterly meetings, which also offer an opportunity for you to have your say about your park, the next is on January 26 at 10.00am in the Auriol Park pavilion and you are welcome to join us. We are winding down our gardening activities for the year – although leaf clearing provides constant exercise until Christmas – and have our usual garden closure in January. So if you can't join us on the 26th, wrap up warmly and call in to the Day Lily Garden on Saturday 4 February 2012, you will be most welcome.

Until then, seasonal greetings from all the Friends.

**Doreen Bennett 020 8337 2366**

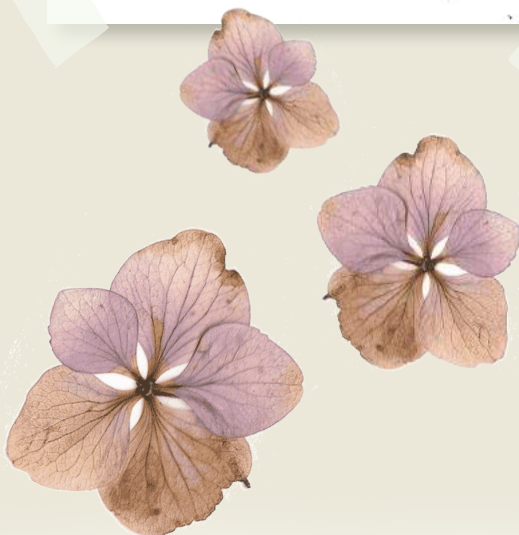
**Wildlife Project:** Work continues twice weekly to create and manage a bio-diverse natural habitat in the area around the pond in Shadbolt Park. Recently we have planted a hedge of native species towards the rear of the site, to screen the compost heaps and woodpiles that we are creating there, to offer a richer variety of opportunity for wildlife. The plants were gifted to us by the Surrey Wildlife Trust out of a Woodland Trust donation to them, of 1000 young trees.

Jobs at the moment consist of clearing leaves from the water, cutting back some of the coarse grass, brambles and bamboo, removing dead vegetation, picking up litter and, regrettably, dealing with dog fouling in the wild area. We hope the latter will decrease now that the Rangers' have posted public education stickers and transfers on bins and paths.

One of the pleasures of pottering about around the pond is meeting so many appreciative park users who come across to chat and tell us how much they love walking through and enjoying the space. With its mix of woodland areas, shrubberies, lawns and borders, Shadbolt Park is a little island of peace and green in our neighbourhood. Restoring the pond there has added immeasurably to this lovely space and seeing the wildlife using the habitat we've built for them is very special. Anybody who fancies 30 minutes or so watching wildlife, maybe doing a bit of pond dipping, clearing up a few leaves, snipping at bramble, tidying up

the noticeboard, doing a litter patrol around the park (plastic rubbish can be particularly dangerous to wildlife) or just wants to stop by for a chat occasionally, please do wander down between 10.30 and 11.30 on Wednesdays or Saturdays. We'd be very pleased to see you.

**Carol Williams**



WINTER 2011



## SHADBOLT PARK

**The Friends:** So far, so mild!! As I write we are set for one of the balmiest winters on record and signs of early wildlife and flowering activity in the Park bear this out. Of course, this being England who knows what tomorrow will bring weatherwise? One certainty is that this will be a momentous year with local and national commemorations and celebrations and the Olympics and Paralympics hopefully showing the world just what our small island can achieve. We plan to celebrate the protected status conferred on Shadbolt Park by being designated a Queen Elizabeth II site, and hope that, by the end of the year, not only will we have introduced the Park to those unaware of it but also will have encouraged infrequent visitors to become regulars.

One last reflection on 2011. At the end of the year three trees were planted in the Paddock area, celebrating the history of Shadbolt Park (see cover) and also providing a legacy for future generations. The trees, well planted and staked, have immediate benefit both aesthetically and environmentally but only those who come after us will have the reward of their mature majesty. We look forward to the trees coming into leaf and will ensure that for the first few years of their lives they are sufficiently watered as all new tree plantings must be, whether they are in the Park or in your garden or improving the street scene outside your house. You will see the planting circles marked with mulch around the trees ensuring that mowers and strimmers do not encroach and that grass is kept at a distance, minimising competition for water.

Watering is but one aspect of what we undertake in the Park and Day Lily Garden, and with your help, however irregular, we can do more. Come along any Saturday morning to the Day Lily Garden between 10.00am and 12noon for more information and introduction to some of the Friends. We look forward to seeing you.

Doreen Bennett 020 8337 2366

**Wildlife Project:** During December and January there was, as you would expect, very little activity in the pond and not a great deal of work for our small but dedicated band of volunteers. By the time you read this there may very well be spawn there - so do pop along and take a look; it was 14 Feb last year when the courting frogs arrived. Litter is very dangerous to many wild creatures, so we have recently begun to patrol the park to clear up any we find. Thanks to the Ranger Service for reacting promptly to my request to go in and remove a large amount of wet cardboard, rags and an old pillow from behind one of the shrubberies, and also for the bin stickers and path transfers about fouling by dogs - since their application we have noticed a significant decrease in dog mess in the wild area behind the pond. We have created a leaf pile and a dead wood habitat at the back near the fence, with material collected from elsewhere in the park. Strong winds in January blew down a lot of branches and twigs, which we gathered up and re-sited more usefully. These heaps will harbour many invertebrates, which will enhance the biodiversity in the area, providing

good food for amphibians and birds. Money left in the pond account has paid for the 3 new trees in the paddock, since, to create the new pond, we had to clear some trees, including a young crack willow, the loss of which saddened me.

Work during this second year of the pond's life is not likely to be very extensive, as the habitat has matured. It is more a matter of keeping an eye out for any problems (litter etc), controlling the growth of the more invasive species, particularly any non-natives, and possibly topping up the water level during dry periods. We may add some more wildflowers, depending on what comes up in the next few weeks. We don't know yet which of those we

put in last season will be successful. We like to meet there twice a week, even if it is just to stop and gaze, so if you'd care to join us, please do. We meet at roughly 10.30am on Wednesdays and Saturdays and stay for up to an hour.

Carol Williams

SPRING 2012



## SHADBOLT PARK REMEMBERED

Shadbolt Park is named after Ernest Hill Shadbolt who spent much of his career in India building of some of their great railway bridges. From 1904 until 1908 he was Director of Railway Construction for the

Indian government. At the age of 70 in 1921 he bought the land off Salisbury Road and having built his home there set about planting rare trees and shrubs from around the world. The recently formed Epsom & Ewell Borough Council bought the house and gardens in 1937 after he had died and opened the gardens to the public. The Head Gardener then, Mr Ketchell, had been with Mr Shadbolt from the time the garden was a field. He had a flat in the house, which was also used as a library. During the Second World War vegetables were grown in many of the flowerbeds to show local residents how to "dig for victory".

John Le Flem became Head Gardener after Mr Ketchell was obliged to retire early as the result of an accident when a branch was being cut from a tree.

When John started work the garden was mature with well-developed trees, shrubs and some flowerbeds providing sufficient work for four men. Many of the original trees and shrubs still existed although some have now sadly been lost. In his early days John remembers the annual special days such as a tulip weekend, the



In 1979 the ground floor area of the house became Dr Bowen-Perkins' surgery. When John Le Flem retired in 1990 the surgery took over the whole house.

The pond was already in its present position in 1958 having been reconstructed and reduced in size after Mr Shadbolt's death. Originally it was filled by rainwater from the roof of the house and overflowed whenever there was heavy rain.

Ken Robinson, the current President of the CRA has lived in Salisbury Road since 1963 and can well remember John Le Flem and his team, and his special days particularly the band concerts. Once a year the CRA used to organise a Sports Day for residents, which the Mayor was invited to open. It was always a day to be remembered as it had been at the time of the Coronation. The sports days ended in about 1970 due to lack of helpers.

In 1977, the year of the Queen's Silver Jubilee, Ken recalls, "We had our first event called Jubilee Fun Day. Once again the paddock came to life with Morris men and in subsequent years the Epsom and Ewell Silver Band, the Romford Drum and Trumpet Corps, a Jazz Band and a Hot Air Balloon. Each year we gave our Fun Day a special name, such as the Medieval Fun Day, Flappers Fun Day and Bonanza"

Up to 2005 Shadbolt Park had contained

before being rescued in the mid 90s. In 1997 the collection was awarded the full National Plant Collection status and was re-established in the secluded area next to the surgery.

In 2006 Doreen Bennett set up the Friends of Shadbolt Park under the umbrella of the Friends of Epsom Parks to protect what was left in the garden and with colleagues started work clearing up the secluded park area and weeding the beds.

Carol Hill in an article in Surrey Gardens Trust newsletter in 2005 says "Shadbolt Park can be described as a little gem; it is compact, quiet and tranquil with level paths giving access to all of it. The park remains much as it was when the gardens were laid out and is a great tribute to Mr Shadbolt's design and planting. The trees have matured and while there have been some casualties, a replanting programme is ongoing.

"A recent walk around the park with the tree officer from the Borough Council showed that a number of unusual trees are still growing there. As the maintenance work is now contracted out some of the more labour intensive parts of the garden have suffered but Shadbolt Park is still a lovely place to visit." Having become a Queen Elizabeth II site the park can continue to be a lovely place to visit.

'Shadbolt Park Remembered' is a condensed version of the pamphlet written by George Crawford, based on the recollections of the retired Shadbolt Park gardener, John Le Flem.





**Friends of Shadbolt Park:** Our little Park, on the northern edge of Epsom, is less well known than we would like but the Friends anticipate more visitors if a bid for funds from Surrey County Council is successful. Attractive as the Park is, it offers little by way of recreation except walking and jogging; important though

these activities are, that's about it for adults, but for children there is the play area. The goalposts in the Paddock have been removed with no plans for reinstatement, so we felt our residents deserved something more. If our bid is successful outdoor gymn equipment, providing low impact exercising for all, will be available so whether you want to improve your general fitness and well being or are an athlete seeking challenges, the means will be there for you without attending a traditional gymn. What better way for Shadbolt Park to mark the Queen's Diamond Jubilee and the recently granted special protected status, than to provide an opportunity to improve the well being of local residents? All we have to do is win the bid!!

In March we completed the clearance of a border bed in the Park, which, due to lack of finances, our Council could no longer maintain and the bed will be planted with shrubs chosen, when mature, to fill the space providing something of interest throughout the year. We knew that bindweed would remain as a constant threat but we had not anticipated another horror, that of theft, as two shrubs were stolen just two weeks after planting. The shrubs have been donated by the community for all to enjoy in situ not to be purloined by thoughtless individuals. Please report any person not wearing a high visibility vest who appears to be gardening to the Ranger service via their Contact Centre, telephone number 01372 732000.

Adoption of the shrub border has, of course, increased our workload in the Park as we also maintain the Day Lily Garden there's plenty to do and we would love you

to come along and help. Don't forget that on June 16 the Day Lily Garden will be open for the duration of the Cuddington Fun Day organised by St. Mary's Church and also look out for notices about the Garden being open on Saturday or Sunday afternoons in July when the day lilies are in bloom. See you there!! **Doreen Bennett, 8 Suffolk Road KT4 7HG, 020 8337 2366, email: d.bennett329@btinternet.com**

From: - WORCESTER PARK LIFE

AUGUST 2013

## Editor's letter



Well, my sun-dance has worked!! (and just in time for the start of the school summer holidays!) Last month, I wrote about how the sun was shining and we were looking forward to a glorious summer - little did I know that just around the corner, the wettest July on record was looming...!

That said, the British weather didn't dampen our spirits and we all cheered our way through Murray's centre court battle with Federer (with the roof on, as course!) whilst we dodged the showers.

August is often a quiet month, with many families (particularly those with school age children) disappearing for a well-earned break or "stay-cation".

Thanks to those of you who got in touch to praise the wonderful Day Lily Garden on show during July

in Shadbolt Park. As one of you wrote 'it has been rather beautiful and uplifting, enjoyed by many people and is a credit to the people who tend the park'.

So, why not dust down your deckchair and relax in the sunshine in your garden or one of our lovely parks with the August issue of the Worcester Park Life - assuming the rain hasn't come back....

Enjoy! Particularly now that we can breathe a sigh of relief as the major gasworks in the area (and associated problems with parking, noise and access) are now more or less completed!!

Jenny  
Editor & Publisher

SUMMER 2012

Worcester Park can also claim an involvement in the Thames Diamond Jubilee Pageant on Sunday 3 June. Local resident Cedge Charlton was rowing in the Man-Powered Boats section; he writes: "Our boat, the Viking, was built by Harland and Wolff as a lifeboat for the TSS Worcestershire launched in 1904. Her mother ship was sunk by a German mine off Colombo, Ceylon, during the First World War. 14th Richmond Sea Scouts acquired her in 1935 and all her present crew learned to row in her during the late 1940s. She is maintained by the 'old rover crew' who row her each year in the Great River Race,

22 miles on the Thames between Greenwich and Ham House; average age at the moment is nearly 75. We were afloat for 8hrs 30 mins for the Pageant and were well wet and cold by the time we came ashore, but very happy to have had the honour to take part."

Dr Bowen-Perkins of the Shadbolt Park Surgery was also involved, on Elvin, the Dunkirk 'Little Ship' which he has restored. The Pageant website ([www.thamesdiamondjubileepageant.org](http://www.thamesdiamondjubileepageant.org)) explains her role in the rescue of troops from the Continent: Elvin left Ramsgate late on 2 June 1940, and arrived at Dunkirk at

first light. They had no charts, but simply followed the traffic and steered for the glare of the fires and the shell-bursts. As soon as they could see, they went alongside the eastern pier, where a column of soldiers was drawn up. A French officer called out, "Combien des soldats?" The skipper could not remember the French for 25, so he shouted "trente", which was more than they could comfortably hold! But another was admitted when one of the French pleaded: "mon ami!" They landed 25 French and 8 British troops on the North-East wall at Ramsgate

THAMES DIAMOND JUBILEE PAGEANT

Sunday 3<sup>rd</sup> June 2012  
LOCAL PARTICIPATION !!





## A Jubilee celebration in Shadbolt Park

On Saturday 16th June, the paddock of Shadbolt Park, between Edenfield Gardens and Salisbury Road, will be the venue for the Cuddington Jubilee Funday, organised by St Mary's Church, Cuddington, in collaboration with other local groups.

Open from 12 noon to 4pm, it will include many stalls, selling plants, needlecraft, jewellery, books, cakes, etc, and numerous sideshows including a bouncy castle. Arena events include an opening performance by the Kingston and Malden Scout and Guide Band, dancing by pupils from Auriol Junior School and the popular dog show. Ewell St Mary's Morris Men will be performing throughout the afternoon. Refreshments will be available, including a barbecue, teas, beer and a Pimms tent. Entry is free. This will also be a chance to celebrate Shadbolt Park's new status as a Queen Elizabeth II Field. Shadbolt Park is named after Ernest Ifill Shadbolt. When he began filling the gardens around his new house Darkfield with rare trees and shrubs from around the world, in the early 1920s, he had already been retired for about 15 years. He had previously had a distinguished career in railway engineering in India, beginning in 1874 and concluding with his service as Director of Railway Construction to the Government of India in 1904-6. Mr Shadbolt lived at Darkfield with his niece, E Lilian Brimble. Miss Brimble had also had an interesting career, as governess to the children of Crown Prince Wilhelm of Germany, the heir to the Kaiser. She was appointed 'Director and Head of the Crownprincely Children's Department', and governess to the eldest princes, Wilhelm and Louis-Ferdinand, in 1911. Miss Brimble remained in this post for three years.



impossible. Two days later war was declared, and she never had the chance to return and bid farewell to her charges. In her candid but generally affectionate memoir, In the Eyrie of the Hohenzollern Eagle, she concludes, "I prefer, while endeavouring to forget some things, merely to remember many sunny hours spent with boys who, to whatever family they belonged, were to me just children, loving and beloved."

Mr Shadbolt died in 1936, and the house and grounds were bought by Epsom and Ewell Urban District Council in the following year, and the gardens became



a public park. John (Jack) Ketchell, Mr Shadbolt's gardener, continued to care for the gardens, remaining as Head Gardener until about 1960. He was succeeded by John Le Flem, who had been appointed as one of his assistants in 1958. Mr Le Flem recalls hearing Mr Ketchell's memories of the gardens in Mr Shadbolt's time: "Mr Ketchell told me that it wasn't tarmacked, it was just gravel paths, and the grass was cut with a scythe. Every year an itinerant person used to stay there for a few months, sleep in one of the sheds, and help with the scything and the planting of shrubs and trees." Mr Ketchell also told him that "during the war they had 'economic beds' to show people how to grow stuff during wartime, on the tree lawn"; produce from the beds was sold from the house.

Mr Le Flem recalls the seasonal routine of planting. In the long flower bed between the house and Salisbury Road "we had tulips and pansies in the spring, and another time we'd have Chionodoxa and croci; you were given a list of plants for each bed, but you made your own plan. In the summer you had antirrhinums, begonias in different colours, marigolds, heliotrope; and you also had Abutilon, semi-standard or standard, dotted here and there. Another time you'd get packets of seeds and mark it out with sand, larkspur and so on." In a round bed on the main lawn, close to the house "we used to do carpet-bedding: we had the red Alternanthera, green Alternanthera and orange-tipped Alternanthera, which you could trim with sheep shears; and you had Sempervivum making the shape of a star; and you'd put a large plant - a Dracaena or something like that - and that'd be the centrepiece." Once the Council introduced a task-based bonus scheme, this became impracticable, so "I used to do my own designs with small plants -



went there; they played under the Catalpa in front of the house. They'd bring in all the seats by lorry a few days before, and we used to lay them out on the Sunday morning;" a wooden bandstand was taken from one park to another as required. In 1973 there was a garden trail with numbered posts and an explanatory booklet, and in the 1980s Tulip Sundays were held for several years: "I enjoyed preparing everything from the planting to the nurturing of them, shading them with netting so that they all came to flowering at the same time."

The above paragraphs are an extract from my new book Worcester Park, Old Malden and North Cheam, which is due to be published this summer - watch this space for further details!

Our photograph this month show Ernest Ifill Shadbolt with his gardener, and the original construction of the pond in his time, courtesy of Sylvia Chainey, a member of his family. Readers of WVPL will be aware of the recent restoration of the pond by volunteers. The species perhaps best associated with the park now is Hemerocallis, the day-lily, thanks to the work of the Friends of Shadbolt Park - more on that in a future article.

Thank you to those who have already made contact to let me know about your planned Jubilee celebrations. I hope to feature some of these in a future article, so I'd



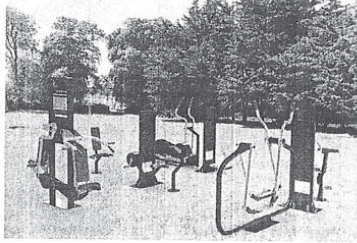
SADLY, DUE TO POOR CONDITIONS  
THE FUN DAY WAS CANCELLED.  
ALMOST TWO INCHES OF RAIN  
HAD FALLEN EARLIER IN THE WEEK.



## SHADBOLT PARK

**The Friends:** Showcase time for the Day Lily Garden is over for another year; the flowering peak is in July when the massed effect never fails to surprise newcomers and regular visitors alike. Comments in our visitor's book reflect their appreciation and are, of course, much valued.

Consultation about the proposed outdoor fitness zone in Shadbolt Park Paddock is ongoing but before proceeding it has to be approved by the Borough Leisure Committee, which meets next in



October. All views on the proposal are welcome please make them known before the meeting to one of our Borough Councillors whose contact details are given on page 3. One of the many installations of the robust gym equipment throughout the country is shown in the picture. The benefits of exercise are well documented. That the proposed fitness zone is wholeheartedly supported by the Shadbolt Park House medical practice speaks volumes. An elderly gentleman who had seen such an installation in a Kingston park, was all in favour but doubted he would make much use of it. Luckily though, whatever your age or fitness level you can utilise it as gently or as vigorously as you wish, and without cost. Much has been made, in this historic year, of legacy, whether it be renewed interest in the monarchy, visiting associated sites or the sporting spin-off leading to greater participation. I am keen to visit, once the Olympic and Paralympic

that is the Olympic Park. This once derelict and contaminated site has been transformed and will be even better once temporary roadways and some buildings are removed. We will then have one of the largest urban parks created in Europe in the last 150 years. Various geographic zones

are represented with vibrant innovative planting and over 45 hectares dedicated to wildlife habitats alone, including reed beds, grasslands, ponds and woodlands with 525 bird boxes, 150 bat boxes and artificial otter holts

provided. If, like me, you need comparisons of scale to visualise, Shadbolt Park is a mere 3.1 hectares. The Olympic Park-designed and planted sustainably should attract visitors and wildlife alike long after the sporting events are but a memory.

As I write, Shadbolt Park has never looked greener. Regardless of weather there's always much we can do to improve the look of our park, so please do call in to the Day Lily Garden any Saturday morning between 10am and 12noon we'd value your help, and comments about any park related topic are welcomed. Doreen Bennett, 8 Suffolk Rd KT4 7HG, 020 8337 236 Email: [d.bennett329@btinternet.com](mailto:d.bennett329@btinternet.com)

**Wildness and Diversity:** The pond in Shadbolt Park is the central feature in a wildlife area and was created as part of the Surrey Wildlife Trust's Greenspace project. Basically this is about improving habitat in urban areas, to help struggling species by building a network of 'breathing places' to

sustain them in our concrete and brick 'deserts'. I am happy to report that most residents understand this and are supportive, but a small number cannot seem to appreciate value in long grass and allowing native plants to grow, flower and set seed, but Nature is not tidy, and loss of wildness is having a serious impact on the whole ecosystem.

An enormous number of our once common species, from wild flowers to the larger mammals like badgers and hares, are in decline, some critically so, and solely because of us. The way we farm and use the land around us has had devastating effects on Nature in the past 50 years. I have never lived in a time when Nature was not under threat; I have grown up with that sadness. I am concerned that my descendants will inherit an even more impoverished natural world, and that's why, for most of my adult life, I've been a part of the fight for nature conservation worldwide.

We are a tiny band of volunteers who 'manage' the pond area by 'minimal interference'. The role is more one of watching over it and tending it gently, enjoying what arrives and thrives and occasionally tackling plants that threaten to 'take over' in places where this will crowd out others. Anyone who wants to

AUTUMN 2012





### THE MOMENT OF UNVEILING

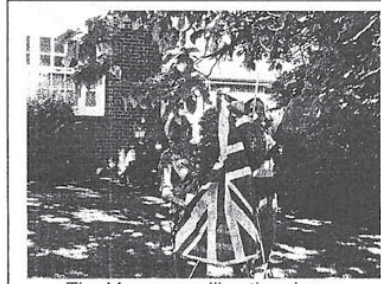
ON FRIDAY SEPTEMBER 7<sup>th</sup> 2012 THE MAYOR OF EPSOM + EWELL  
COUNCILLOR CHRISTINE LONG  
UNVEILED THE QUEEN ELIZABETH II FIELD PLAQUE FOR SHADBOLT PARK

THE PLAQUE, NOW FIXED ON THE SHADBOLT PARK HOUSE  
SURGERY WALL, SHOWS OUR STATUS AS A 'FIELD IN TRUST'  
PROTECTED FROM FUTURE DEVELOPMENT



## SHADBOLT PARK

**The Friends:** On a sparkling early September morning the much-delayed plaque unveiling took place in the Park. The Queen Elizabeth II Fields in Trust plaque signifying a protected status in perpetuity for our parkland was



The Mayor unveiling the plaque

revealed by Mayor Christine Long and is now fixed firmly to the surgery wall. The event enabled the Friends to welcome, not only the Mayor, but also John le Flem, who remains a popular figure with residents although long retired from his well-respected park keeping role. Our vicar, Andy Cain, new to this parish, also joined us and we hope he and his family will enjoy using our Park.

The following day was the start of Heritage Weekend and Jeremy Harte, the Bourne Hall Museum curator, led a walk around Shadbolt Park, enlightening us with biographical details of Ernest Shadbolt and also highlighting some of the most beautiful trees in the arboretum. Of those visitors taking part in the walk none was familiar with Shadbolt Park but all promised to return to see it through the changing seasons.

Regular users of the Park and Paddock will have seen the sterling work undertaken by the Grounds Maintenance team recently. The work is part of a rolling programme, so the next time you see one of the team at work, please stop to have a word and

let them know how much their efforts are appreciated, it is all too easy to take for granted work done on our behalf. Yes, I know it's their job but I detect a new sense of pride in their work, simply

because they are doing it well and making a difference we can all see.

In late October the Leisure Committee accepted our proposal for an outdoor fitness zone in the Paddock, Epsom & Ewell Borough Council will now proceed to ensure that the project is realised.

Nearly time now for the Friends to 'hibernate' from mid-December until the end of January, but we'll be back in action in the Day Lily Garden on 2 February. Until then, seasonal good wishes to all. Doreen Bennett 8 Suffolk Road KT4 7HG, 0208 337 2366

**Down by the pond:** On Wednesdays and Saturdays, in all weathers, you will see us there between 10.30 and 11.30 am, attending to what may need doing and

chatting to those who come by. If you pop along on Saturdays, you may get to see what lurks beneath the pond surface, as we take some samples in Bernard's trusty ice cream tubs!

It was a pleasure, on one occasion to see Andy Cain, Vicar of St Mary's with his small son, both in wellies and

carrying a magnifying glass, and both seemed fascinated by the small creatures we'd scooped from the water that morning.

One task that absorbs me just now is collecting leaves and wood to pile up in corners - places where animals may hide and find food. Blackbirds, robins, toads, frogs, hedgehogs and even foxes will hunt for invertebrates in compost heaps. Foxes and badgers eat enormous quantities of worms, though I doubt we are likely to see badgers in the park!

As the seasons change, we see different creatures down by the pond, and I continue to be amazed at the variety there is in this small urban space.

Carol Williams

WINTER 2012



## The collection that may come again another day...

AUTUMN 2012

**T**he Day Lily Garden, as it is now called, is thriving. After the removal of so many hemerocallis in 2006, the Friends of Shadbolt Park decided to concentrate the remaining plants into fewer beds and a large border was converted to a shrubbery, now maturing well.

A mixed border has also been created to add more interest because, although the day lilies are spectacular when in flower, it is for a relatively short period only.

Their flowering season seems to have shifted slightly since we first took over. Then, we still had many in flower at the start of August;

now, by mid-July most have faded except, of course, the occasional late bloomer.

Apart from adding Growmore when we divide and replant and the occasional top dressing of well-rotted farmyard manure when this becomes available free, nothing else is done, not even watering.

I believe our council [Epsom and Ewell] panicked when Roger Stedman, who had curated the collection, announced his retirement, and, linking this with the perpetual problem of lack of parking space for the nearby medical practice, the two issues somehow fused into one and so "disposal" of the site was their option.

To the best of my knowledge there never was serious planning to provide car parking spaces anywhere in the park, just expressions of need and that more spaces would be welcomed.

The friends' group at that time was newly formed and, since we have been given the "ransacked" Day Lily Garden to care for we have gone from strength to strength and not only care for that garden but work in the park itself when necessary.

The group numbers about 15, and on any given Saturday morning six to eight people will arrive to work between 10am and noon, except for the month of January.

At first, relations with the medical practice were a little strained – perhaps we were seen to have thwarted a pipe dream of obtaining more car parking spaces – but now there is no friction and where wider issues concerning the park have surfaced, we have nothing but support from the practice.

The Day Lily Garden is within a space that houses medical records etc and that is leased from the council by the medical practice. We are permitted a small section for tools and compost.

The Day Lily Garden is open each Saturday morning and on Saturday and Sunday afternoons when the day lilies are in flower. The local church has a community fun day in June when the our garden is also open.

When I set up the Friends of Shadbolt Park, restoration of National Collection status was an aim and although it still remains an aspiration, the study necessary to profile and positively confirm all the named plants and the identification of the unknowns is not possible at present.

Dr Anne Foulkes  
Surrey National Plant  
Collections Co-ordinator

## In the not so dim and distant past

*In our continuing series about the Surrey Group's National Collections, we look at some collections that have left the scheme but it's not all unhappy news*

**T**he diploid Hemerocallis collection at Shadbolt Park was started by

Maurice Selwood, a park superintendent and an early member of the Surrey Group. After his retirement the collection became neglected and the labels were vandalised.

Roger Stedman took it over in the mid 1990s and, with the help of Helen Maltby, a Hemerocallis collector and enthusiast, set about identifying the plants. When her health deteriorated Helen offered her own extensive collection to Epsom and Ewell Borough Council.

Helen's enthusiasm had rubbed off on Roger and he gladly accepted the plants; the collection was re-established in a secluded area of Shadbolt Park where it was less likely to be vandalised.

In 1997 the collection was awarded full National Plant Collection status and, apart from some problems with

bindweed and the occasional loss of labels, it thrived under Roger's care. He held an open day each year in early July, when most of the cultivars were in full bloom; he also offered to propagate any plant that caught your fancy. The collection could be viewed by appointment at other times. Almost all the plants have been photographed when at their best and provide an excellent record of the collection.

Roger retired in April 2005. The council did not fill his position of horticulturist so there was no one available to care for the collection and we were told that the land was required to provide more car parking for the adjacent medical practice.

When a National Plant Collection becomes available in this way it is first offered to the other National Plant Collection Holders of the same genus. In the case of Hemerocallis there were six. All their collections were specialised but there were cultivars they wished to obtain, which they did by splitting the clumps. Surrey Group members split other clumps for propagation for plant sales and the plant exchange but this was not to be the end of the story.

Doreen Bennett continues voluntary work with supporters in Shadbolt Park continuing what has become a very exciting saga, so perhaps the collection will regain its status one day.

The story of the Euonymus and Cotoneaster collections at Merrist Wood is told by Geoff Yates and does not have such a happy ending. The collections were withdrawn from the scheme in 1997 because they

were not cared for on Geoff's retirement. The type of course offered at Merrist Wood changed but we do know that some of the Cotoneaster material went to Rumsey Gardens in Hampshire where the collection now contains 420 taxa and has scientific status.



# A day in the life of a Ranger

Being a member of Epsom & Ewell Borough Council's Ranger Service team means that every day is varied and there are never two days the same.

We all have our regular tasks to perform from playground checks, opening pavilions for bookings to locking parks and the cemetery. We offer a 'seven days a week' service, which means working in shifts and, depending on the season, all sorts of different hours.

As Rangers we can go from installing community alarms in people's houses one minute to investigating illegal camping on an open space, responding to a report of a tethered horse or stray dog, repairing fencing or removing rubbish left by a fly-tipper.

We also organise various community events in the Borough with the latest one being the Nonsuch Awareness Day. A great day out was had by everyone and from what residents have been telling us the best one yet – we will have to do better next year then!

Our most recent event was a couple of litter-picking days at West Ewell Infant School where we introduced the children to our mini sweeper/giant vacuum cleaner and Ranger vehicle. We then gave them all their own special litter-pickers to help clean up their playground and the Hogsmill - we really hope we helped to inspire them to care about their local environment.

Last year we were involved in all sorts of promotions from 'Safe Cycling' in our parks, to using stencilled messages on paths to help tackle dog fouling issues.

Of course whatever we plan to do in a day it can all change in an instance when we answer our response phone... we just never know what we will be asked to deal with, but we all love what we do!



Photo courtesy of the Epsom Guardian

Above: Ranger Andrew with pupils from West Ewell Infant School on their litter-picking day  
Left: Rangers Andrew and Michael working with the Friends of Court Rec  
Below: Ranger Pat & the Friends of Shadbolt Park on their task day



If you would like to know more about our Ranger Service or talk to us about any of these issues please phone us on 01372 732000.

We hope this scrapbook has inspired you to get involved with the park and garden. Many thanks to Ann and Doreen for sharing this material with us.